

Health Profile Chartbook 2014

Mason County



Introduction

This Chartbook is based on the Michigan Health Profile Chartbook, compiled by the Michigan Department of Community Health.

Using similar indicators, the Chartbook looks at available data in the ten counties within District Health Department #10. Comparisons are made to the total jurisdiction of DHD#10 and Michigan. In addition, comparisons are made to the Healthy People 2020 targets, when available.

While the information collected is very helpful in determining health status of a community, there are limitations to the data. The main considerations are:

- Differences in results are found among various data sources, even when reporting on the same variable.
- Small sample size may be of concern in rural areas and data may not be available at the county level.

Table of Contents	Page
Demographics	3-4
Poverty	5-6
Access to Health Care	7
Leading Causes of Death	8
Years of Potential Life Lost	9
Mortality Rates: Cancer, Cardiovascular Disease, and Diabetes	10
CVD Hospital Discharges	11
Cancer Incidence	12-13
Fatal Injuries	14
Sexually Transmitted Diseases: Gonorrhea and Chlamydia	15
Birth Related	16-17
Health Behavior Risk Factors: Obesity, Overweight, Smoking, Physical Activity and Binge Drinking	18
Poor Mental Health, Oral Health, Nutrition, and Adult Immunization	19
Heart Attack, Stroke, Asthma, and Diabetes	20
Immunizations	21-22

Demographics

- Population is 2013 estimate.
- Age and race, 2013.
- Education based on persons over age 25, 2009-2013.
- Income and poverty data, 2009-2013.

Source: US Census Bureau

Source for jobless rate: Michigan Department of Technology, Management and Budget; Local Area Unemployment Statistics, 2014.

Population:	Mason	Michigan	Race and Ethnicity:	Mason	Michigan
Total population	28,605	9,895,622	White	95.8%	80.1%
Persons under 5 years	5.2%	5.8%	Black	0.8%	14.3%
Persons under 18 years	20.5%	22.7%	American Indian/Alaska Native	1.1%	0.7%
Persons 65 years and over	20.7%	15.0%	Asian	0.5%	2.7%
Education:			Hispanic	4.2%	4.7%
High school graduates	89.5%	88.9%	Income:		
Bachelor's degree or higher	19.8%	25.9%	Median household income	\$41,136	\$48,441
Persons below poverty	16.2%	16.8%	Jobless rate	7.4	7.2

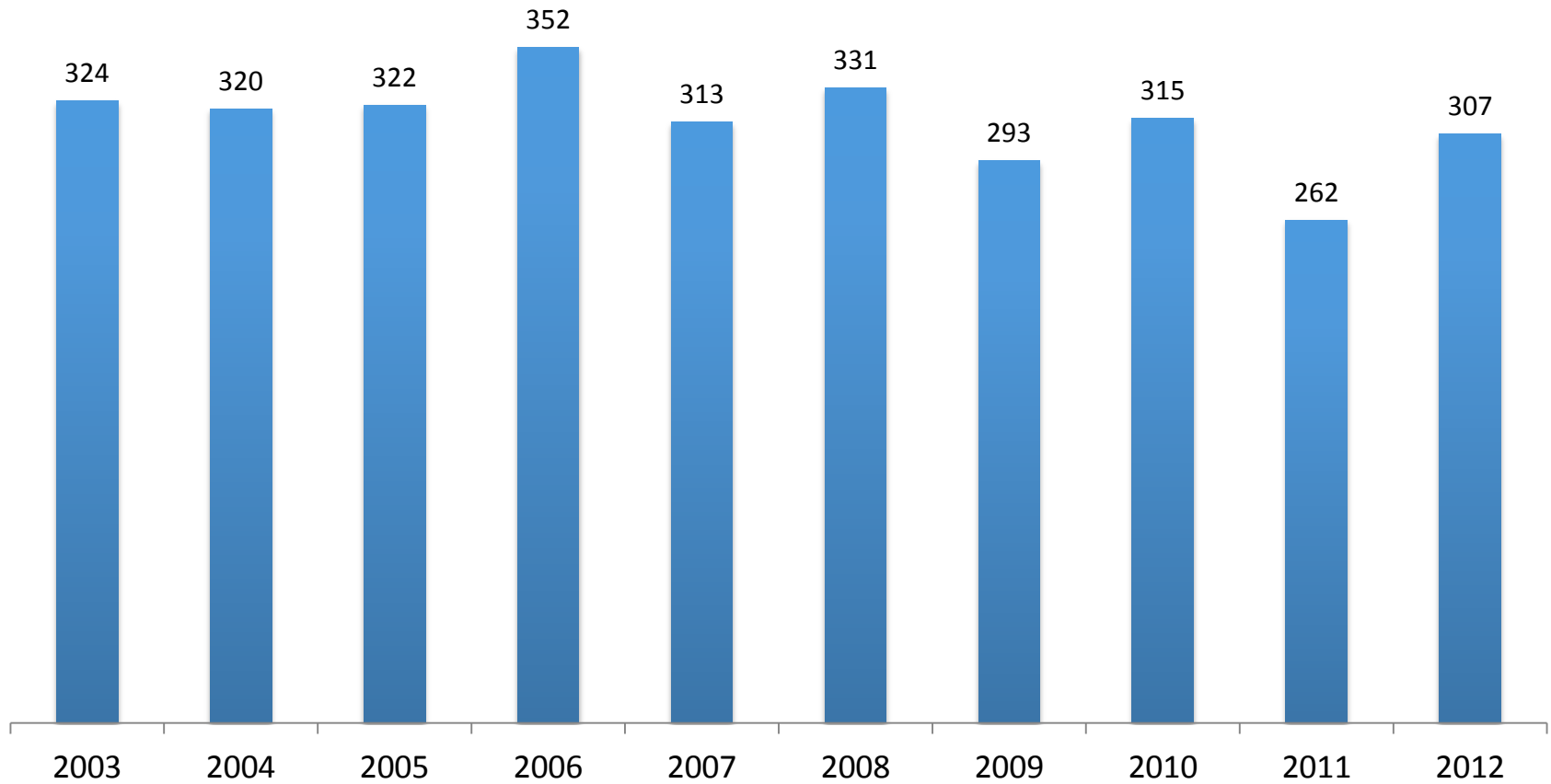
Language Spoken at Home		
	Mason	Michigan
Speak a language other than English	4.4%	9.1%
Spanish or Spanish Creole	2.6%	2.9%
Other Indo-European languages	1.5%	3.0%
Asian and Pacific Island languages	0.2%	1.5%
Other languages	0.1%	1.7%

Source: US Census Bureau, 2009-2013
American Community Survey 5-Year Estimates.

Births

Number of births by year

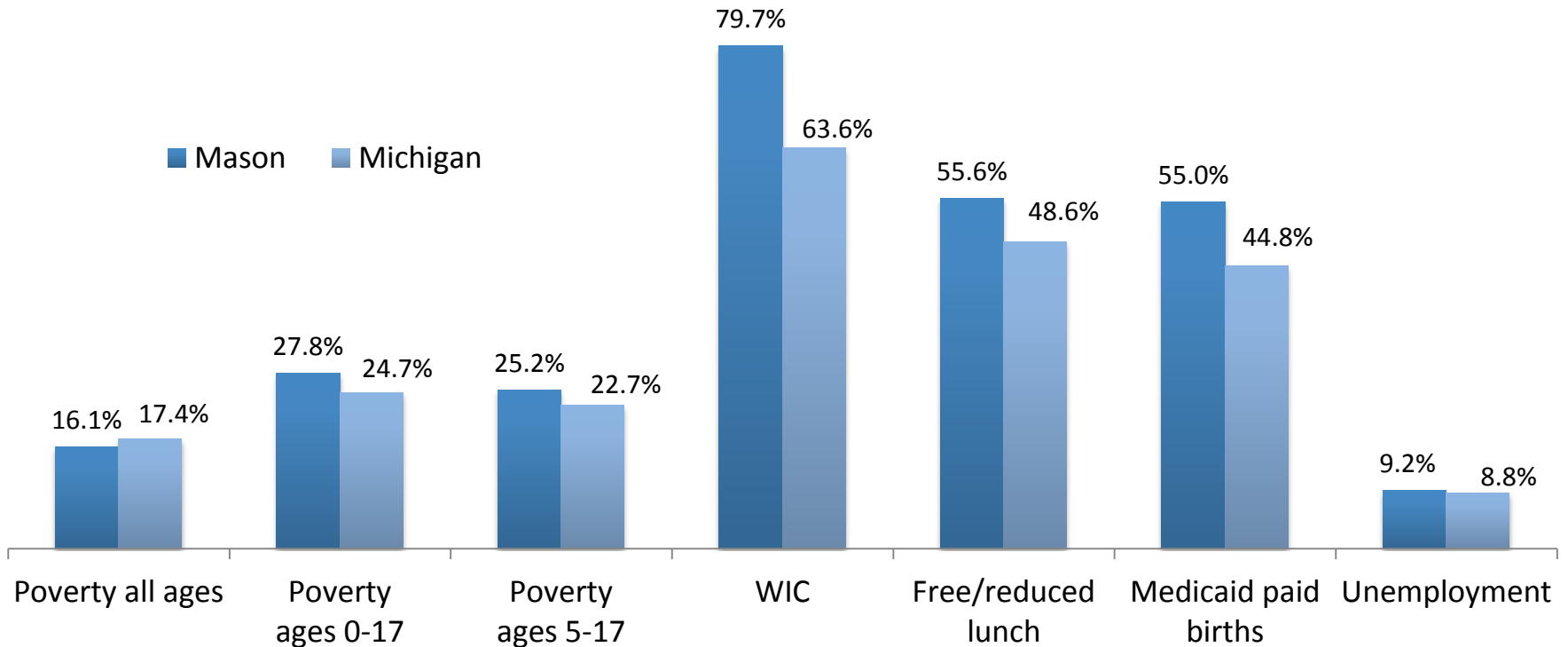
Source: Michigan Department of Community Health



Poverty

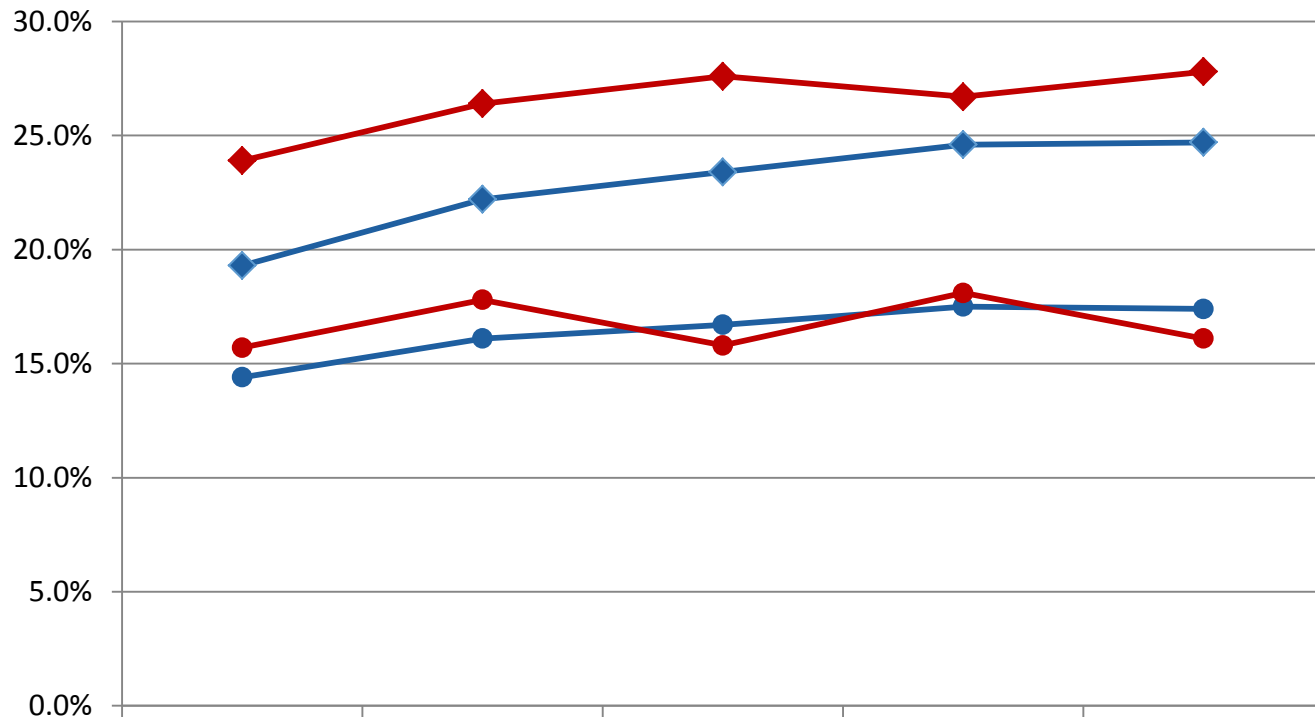
- Poverty status is based on those living below the poverty threshold in 2012 .
- WIC (Women, Infants, and Children) is determined by the number of children age 0-4 who received benefits in Mason County in 2013. Data reflect the county of service.
- School children eligible for free and reduced price lunch is based on family income below 185 percent of poverty in 2013.
- Percent of births paid by Medicaid in 2012, based on a three year average.
- Unemployment is based on the number of unemployed compared to the number in the labor force in 2013.

Source: Michigan League for Public Policy provided data from the US Census Bureau and Small Area Income and Poverty Estimates (SAIPE); Michigan Department of Education; Michigan Department of Community Health; and Bureau of Labor Statistics.



Poverty Trend Data

Source: US Census Bureau and Small Area Income and Poverty Estimates (SAIPE) website, provided by Michigan League for Public Policy.

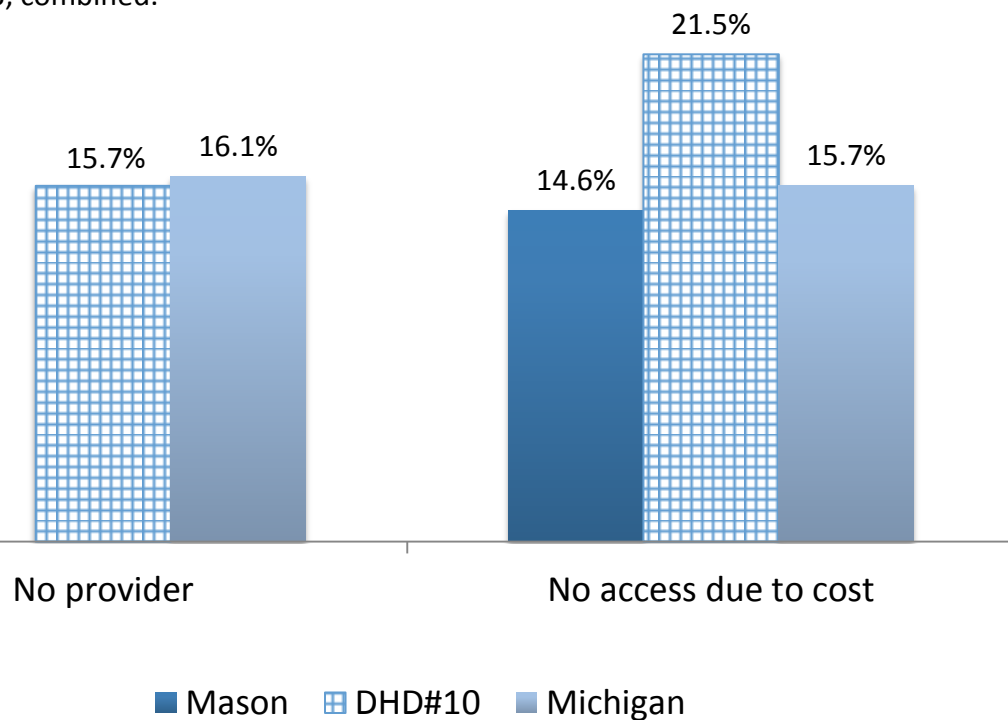


	2008	2009	2010	2011	2012
Michigan - children 0-17	19.3%	22.2%	23.4%	24.6%	24.7%
Mason - children 0-17	23.9%	26.4%	27.6%	26.7%	27.8%
Michigan - all ages	14.4%	16.1%	16.7%	17.5%	17.4%
Mason - all ages	15.7%	17.8%	15.8%	18.1%	16.1%

Access to Health Care

Information on access to care presented in the graph below includes those who report not having a health care provider and those who report no access to care in the past year due to cost. Data on providers are not available for Mason County.

Source: Michigan Department of Community Health, Michigan Behavioral Risk Factor Surveillance System, 2011-2013, combined.



Number of people per health care provider

	Mason	Michigan
Primary care physicians	1,434:1	1,268:1
Dentists	1,912:1	1,522:1
Mental health providers	494:1	661:1

Mental health providers include psychiatrists, clinical psychologists, clinical social workers, psychiatric nurse specialists, and marriage and family therapists who meet certain qualifications and certifications. Source: County Health Rankings, 2014.

**Healthy Michigan Plan
County Enrollment :**
Mason – 1,599
December 29, 2014

Leading Causes of Death

Leading causes of death are rates per 100,000 population.

* too small to calculate

Source: Michigan Department of Community Health, 2012.

Causes of Death	Mason County	DHD#10	Michigan
Heart disease	170.0	191.1	197.9
Cancer	184.4	176.7	174.9
Chronic lower respiratory disease	73.5	53.6	45.2
Stroke	*	36.9	37.2
Accidents	*	43.9	36.6
Alzheimer's	*	27.0	25.6
Diabetes	*	27.8	23.0
Kidney disease	*	11.1	13.5
Pneumonia/Influenza	*	11.2	13.3
Suicide	*	18.1	12.4

Years of Potential Life Lost

- The number of years of potential life lost are rates calculated as the number of years between the age at death and 75 years of age for persons dying before their 75th year.
- Rates are per 100,000 population under 75 years of age.

* too small to calculate

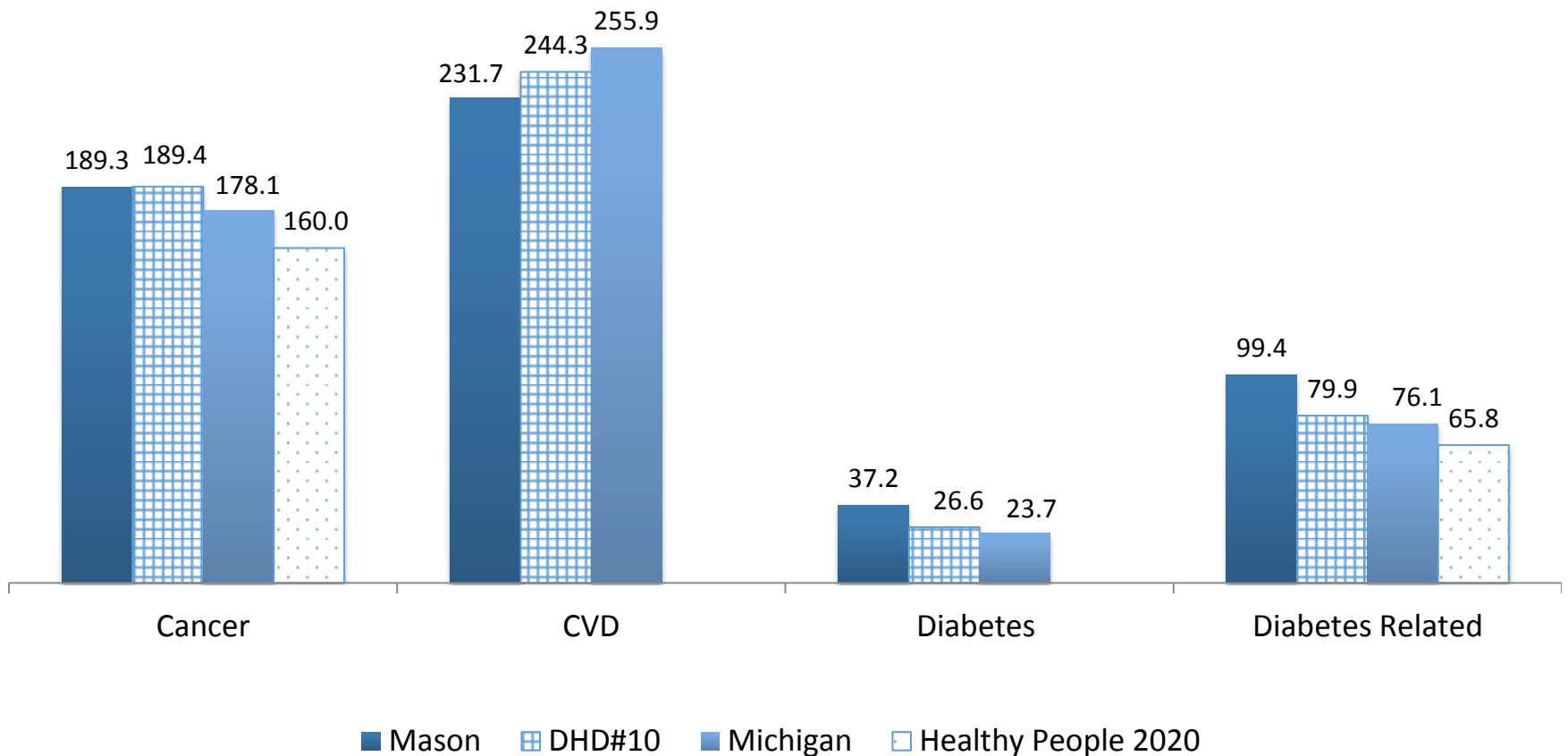
Source: Michigan Department of Community Health, 2012.

Cause of Death	Mason County	DHD#10	Michigan
Cancer	2,653.6	1,825.4	1,658.7
Heart disease	1,641.8	1,422.6	1,252.7
Accidents	*	1,212.6	985.7
Suicide	*	558.0	403.3
Perinatal	0	*	365.4
Homicide	*	*	332.8
Lower respiratory	248.2	280.0	221.7
Liver disease	*	182.5	202.3
Diabetes	*	224.0	180.0
Cerebrovascular	*	134.8	174.2
Congenital	*	*	155.3
Septicemia	*	80.5	72.7
Flu/pneumonia	*	47.7	69.7
Nephritis/nephrosis	*	31.1	69.4
HIV	0	*	37.9

Mortality Rates: Cancer, Cardiovascular Disease, and Diabetes

- Mortality rates are age adjusted and per 100,000 population.
- Healthy People 2020 objectives are included for cancer mortality and diabetes related mortality rates.

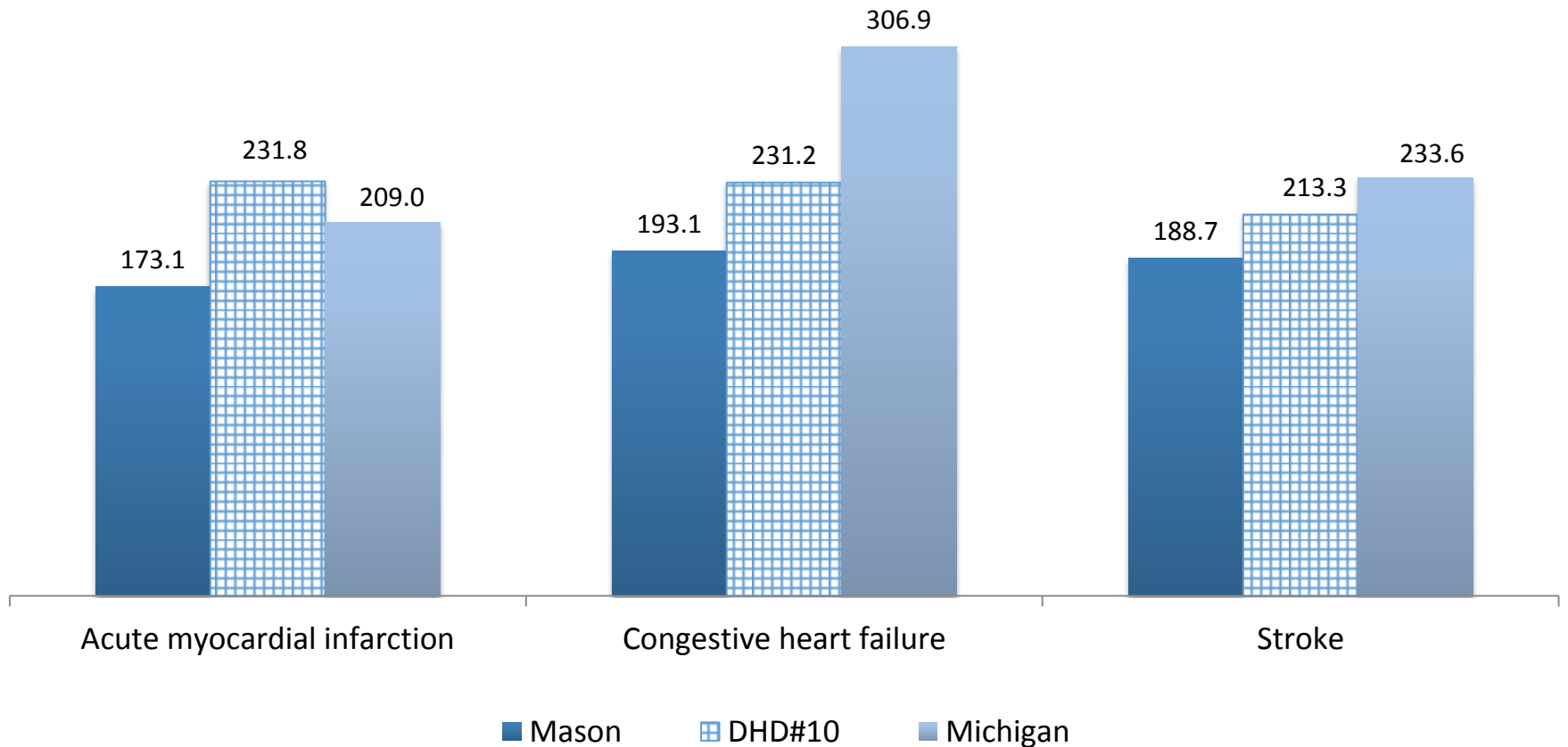
Source: Michigan Department of Community Health, 2010-2012.



Cardiovascular Disease Hospital Discharges

• Rates are age adjusted, per 100,000 population.

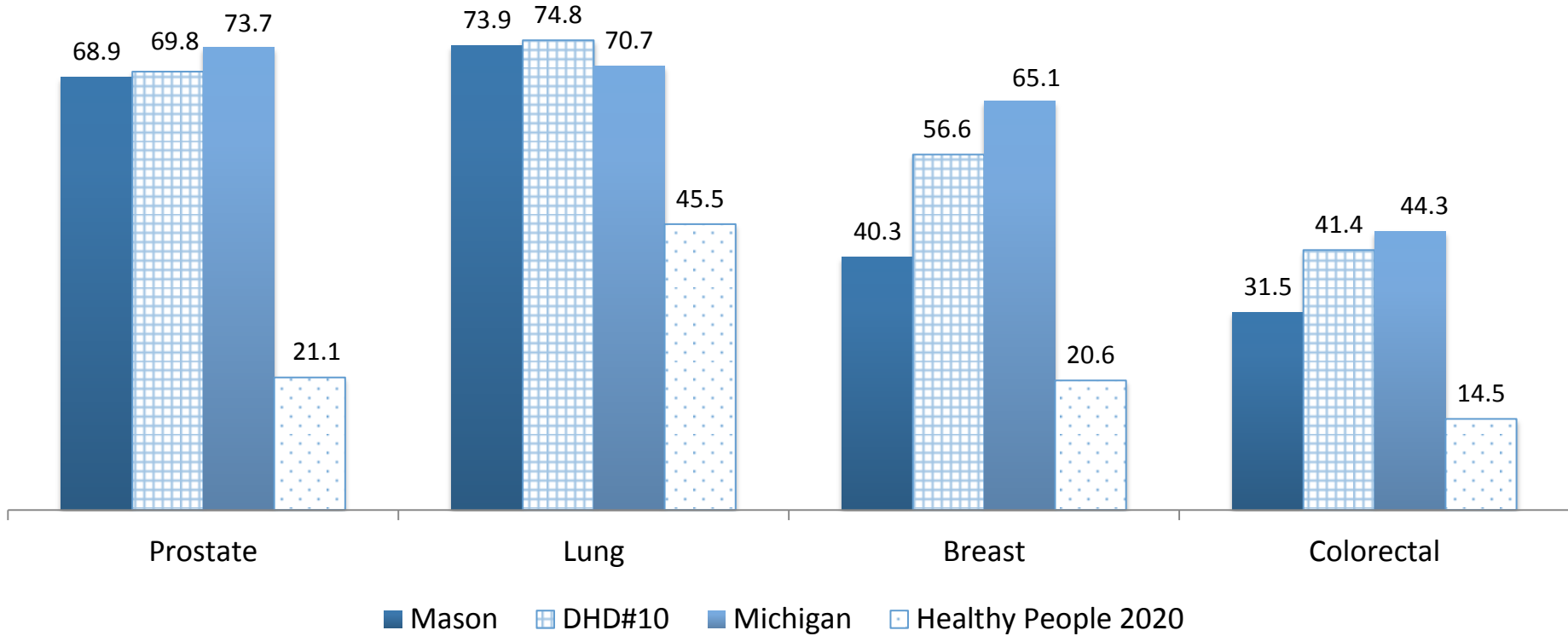
Source, Michigan Department of Community Health, 2010-2012.



Cancer Incidence

Cancer Incidence, 2009-2011		
Mason	DHD#10	Michigan
359.9	449.0	479.4

Rates are age adjusted, per 100,000.
Source: Michigan Department of Community Health.



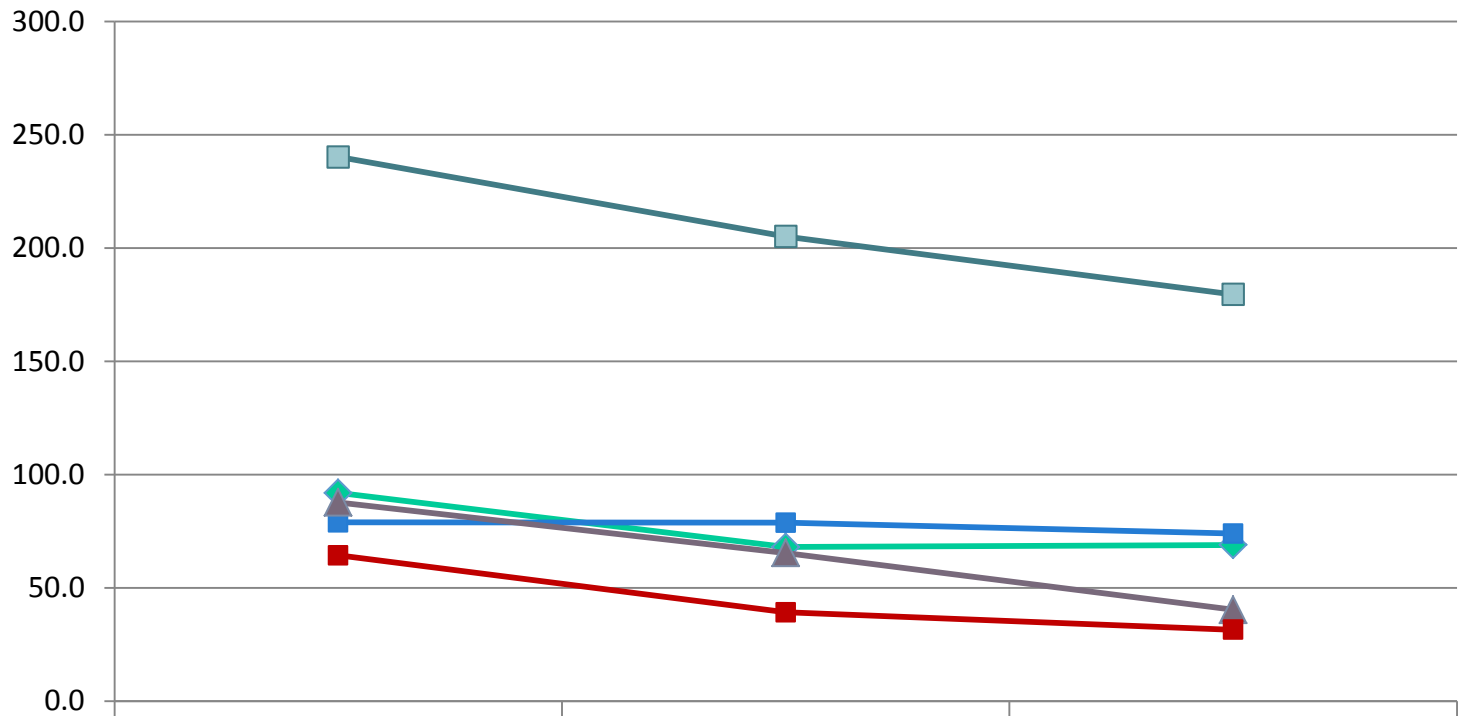
Age adjusted rates per 100,000 population, 2007-2011, MDCH

Cancer Incidence Trends

Mason County

Age adjusted rate per 100,000

Source: Michigan Department of Community Health



	1997-2001	2002-2006	2007-2011
◆ Prostate	91.9	68.0	68.9
■ Lung	78.9	78.7	73.9
▲ Breast	87.7	65.4	40.3
■ Colon	64.3	39.2	31.5
■ All other sites	240.2	205.1	179.5

Fatal Injuries

The Healthy People 2020 targets for fatal injuries per 100,000 are as follows:
 Suicide: 10.2 Poisoning: 13.1 Falls: 7.0
 Drowning: 1.1 Burn/fire/flare: 0.86 Firearm related: 9.8
 Motor vehicle traffic crash related: 12.4

Source: Michigan Resident Death files, Data Development Section, Michigan Department of Community Health.

Number of fatal injuries by year		2007	2008	2009	2010	2011	2012
Mason	Unintentional (transport)	3	4	5	3	11	2
	Unintentional (other)	8	7	4	2	14	10
	Self-inflicted/suicide	0	6	2	12	10	3
	Assault/homicide	1	0	0	1	0	2
	Other	0	2	0	0	0	1
Michigan	Unintentional (transport)	1,240	1,139	1,101	1,103	1,035	1,078
	Unintentional (other)	2,417	2,489	2,595	2,607	2,782	2,660
	Self-inflicted/suicide	1,123	1,173	1,164	1,265	1,216	1,255
	Assault/homicide	702	642	658	611	657	737
	Other	444	442	499	437	469	443

Sexually Transmitted Diseases: Gonorrhea and Chlamydia

- Gonorrhea: The Healthy People 2020 target for females is no more than 257 incident cases and males no more than 198 incident cases per 100,000 population aged 15-44 years be reported per year.
- Chlamydia: The Healthy People 2020 target for females aged 15-24 attending family planning clinics with the past 12 months and testing positive for chlamydia will be less than 6.7%.

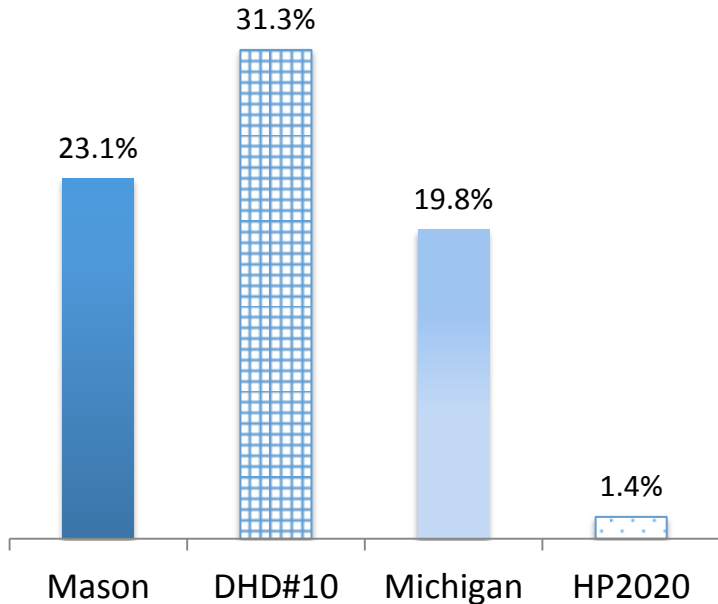
Source: Michigan Sexually Transmitted Disease Section, Michigan Department of Community Health.

Gonorrhea			
	Annual average number of cases 2003-2007	Annual average number of cases 2008-2012	Number of cases reported in 2013
Mason	8.4	2.4	6
DHD#10	53.0	30.4	19
Michigan	16,588.6	14,640.6	10,553

Chlamydia			
	Annual average number of cases 2003-2007	Annual average number of cases 2008-2012	Number of cases reported in 2013
Mason	32.6	40.0	60
DHD#10	405.6	513.4	527
Michigan	38,399.8	48,807.8	45,091

Birth Related

Smoked while pregnant



Smoked while pregnant were those who had a history of smoking, but never quit, plus those who quit at some point between estimated conception and birth data.

Source: Michigan Department of Community Health, 2012.

Teen Pregnancy

Mason	DHD#10	Michigan
53.3	47.7	45.0

Teen pregnancy rates are per 1,000 females ages 15-19 and include live births, abortions, and estimated miscarriages, 2010-2012 average. Source: Michigan Department of Community Health. Healthy People 2020 target for teen pregnancies among 15-17 year olds is 36.2 per 1,000 females. The HP 2020 target for teen pregnancies among 18-19 year olds is 105.9 per 1,000 females.

Low Weight Births

Mason	DHD#10	Michigan
6.7%	7.2%	8.4%

Low weight births are less than 2,500 grams (approximately 5 pounds, 8 ounces). Source: Michigan Department of Community Health, 2010-2012.

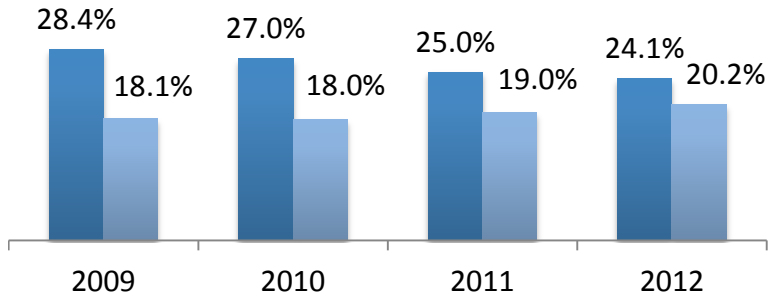
Infant Mortality

Mason	DHD#10	Michigan
Too small to calculate	7.6	6.9

Infant deaths: Deaths occurring to individuals less than 1 year of age. Infant mortality rate is calculated as the number of deaths per 1,000 live births, using a three year average from 2010-2012. Source: Michigan Department of Community Health.

Birth Related Trends

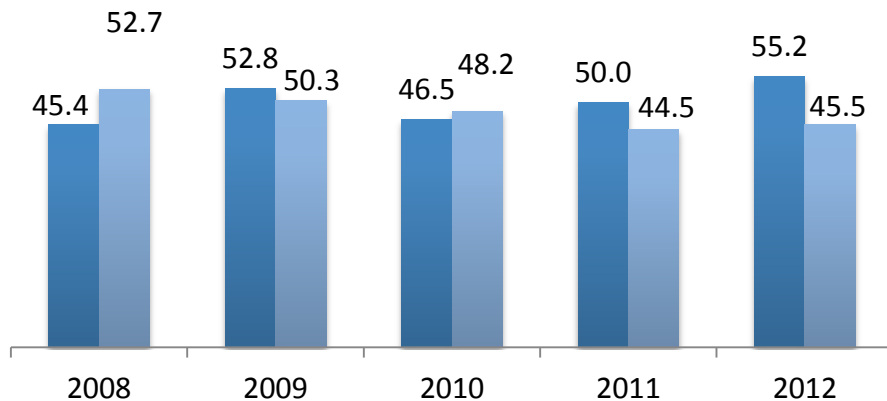
Smoked during pregnancy



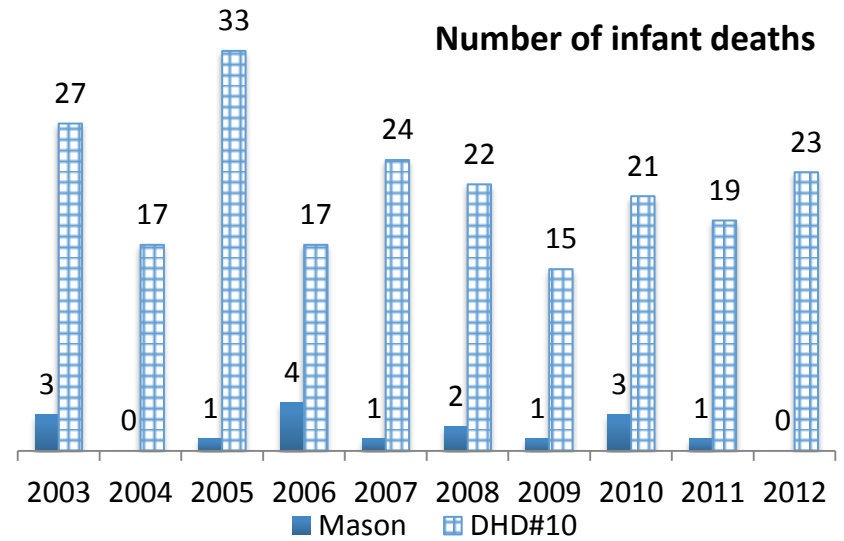
Two year average in 2009; three year average for subsequent years

■ Mason ■ Michigan

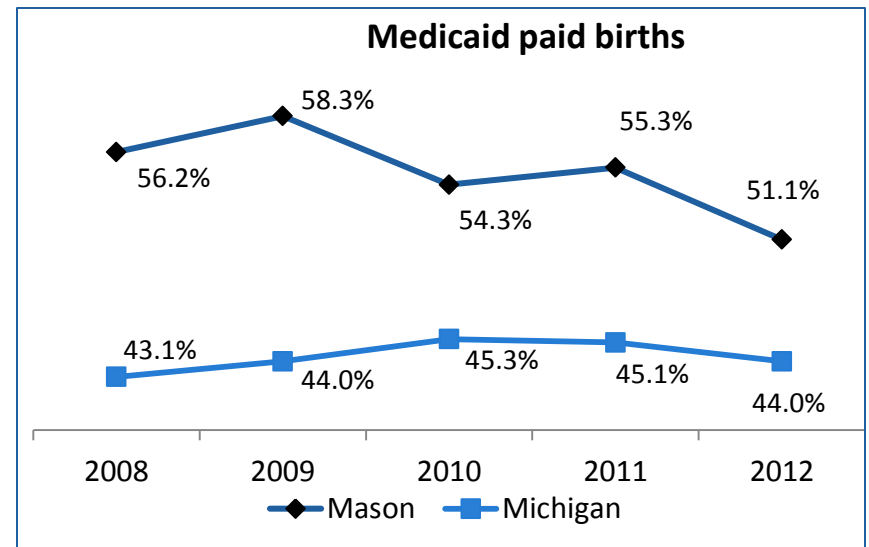
Teen pregnancy rate per 1000



Number of infant deaths



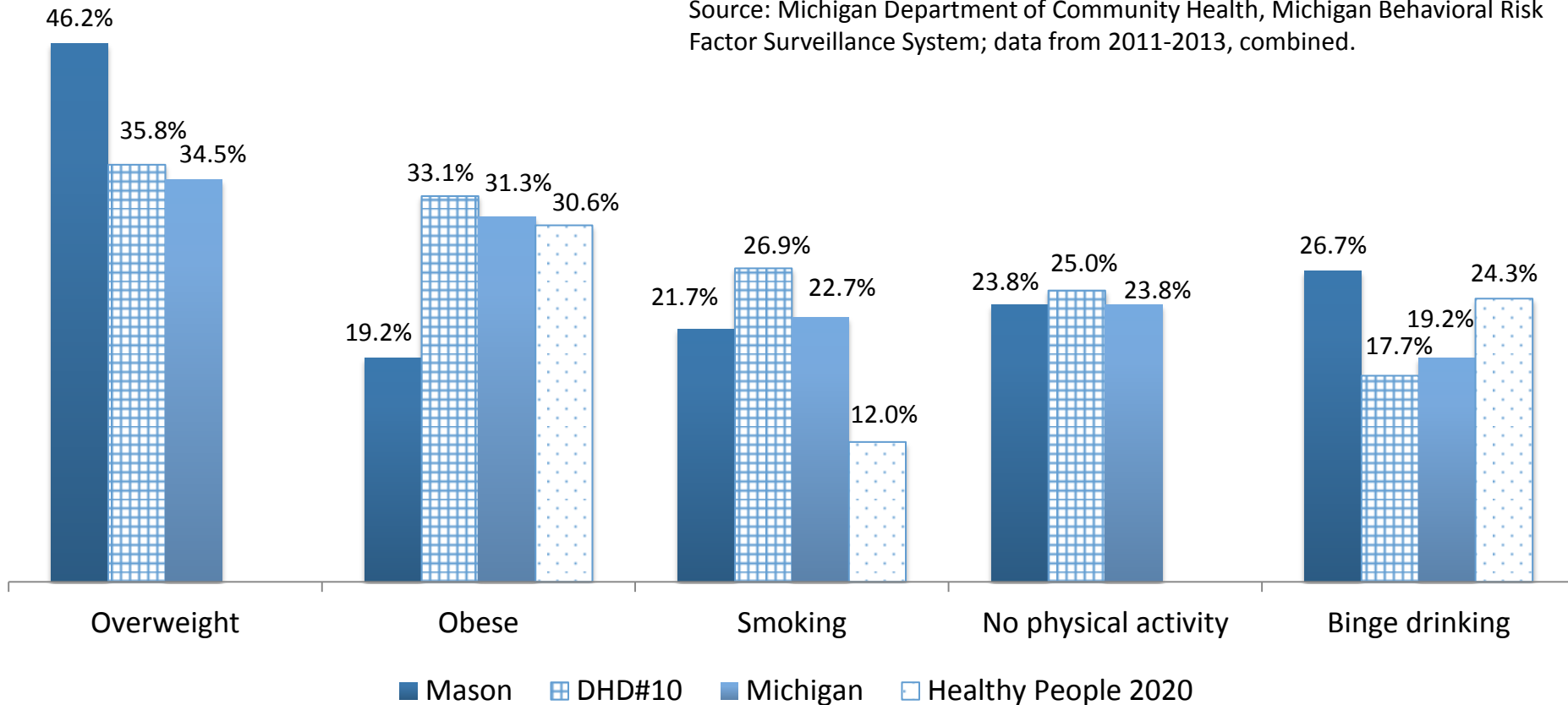
Medicaid paid births



Health Behavior Risk Factors: Obesity, Overweight, Smoking, Physical Activity, and Binge Drinking

- Overweight is having a body mass index (BMI) between 25.0 and 29.9. Obesity is a BMI of 30 or greater.
- Overweight and obesity are calculated by self reported height and weight. Healthy People 2020 target for obesity is 30.6%.
- The Healthy People 2020 target for cigarette smoking is 12%.
- Physical activity is measured as the percent of adults who reported not participating in any leisure-time physical activities or exercises such as running, calisthenics, golf, gardening, or walking during the past month.
- Binge drinking is defined as the consumption of five or more drinks per occasion for men or four or more drinks per occasion for women at least once a month in the previous month.

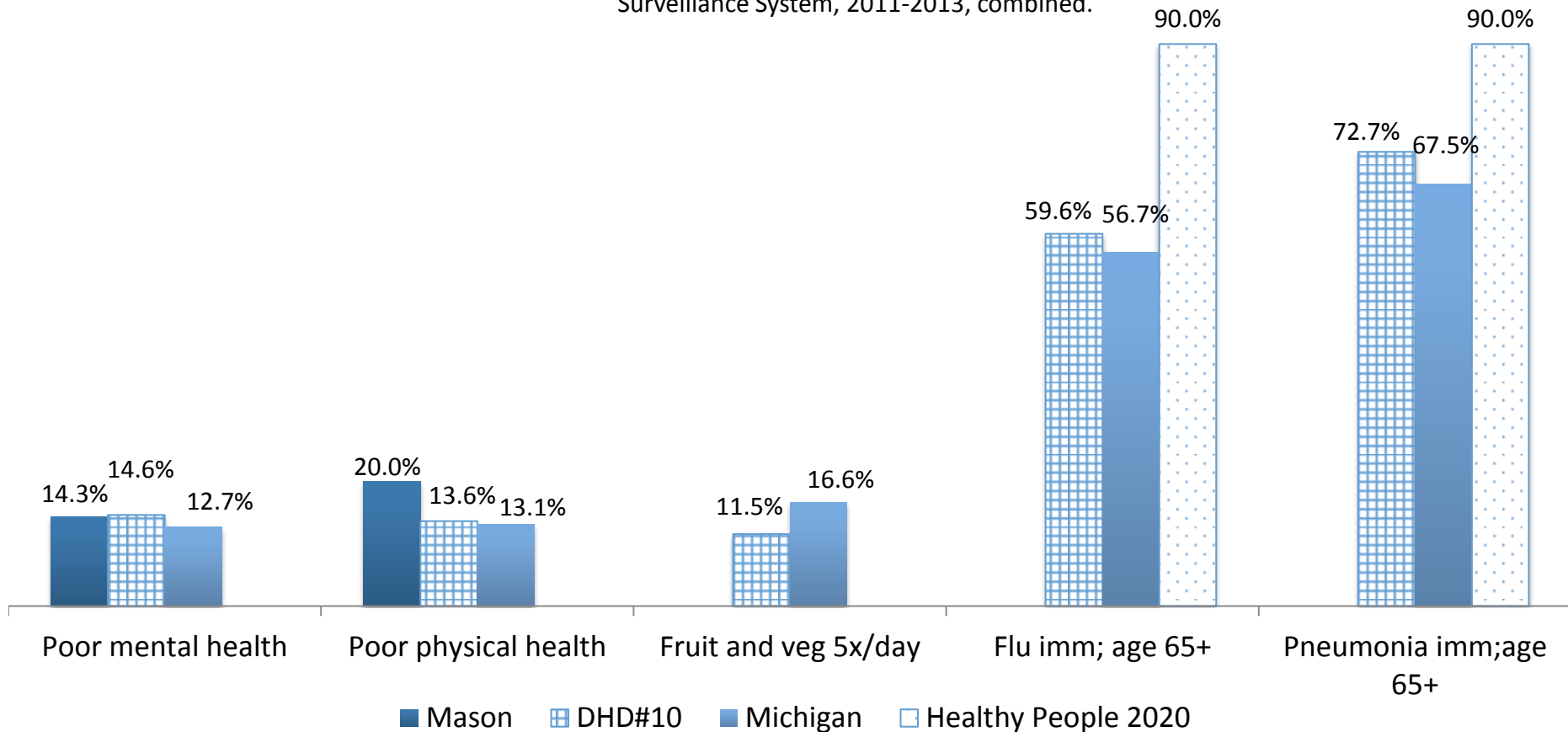
Source: Michigan Department of Community Health, Michigan Behavioral Risk Factor Surveillance System; data from 2011-2013, combined.



Health Behavior Risk Factors: Poor Mental and Physical Health, Nutrition, and Adult Immunization

- Poor mental health includes the percent of adults reporting stress, depression, and problems with emotions on at least 14 of the past 30 days. Poor physical health includes the percent of adults reporting their physical health was not good on at least 14 of the past 30 days.
- Fruit and vegetable consumption includes five or more times per day.
- Immunizations include the percent of adults over age 65 who reported receiving a flu immunization in the past year and who have ever had a pneumonia vaccine.
- Data on fruit and vegetable consumption and immunizations are not available for Mason County.

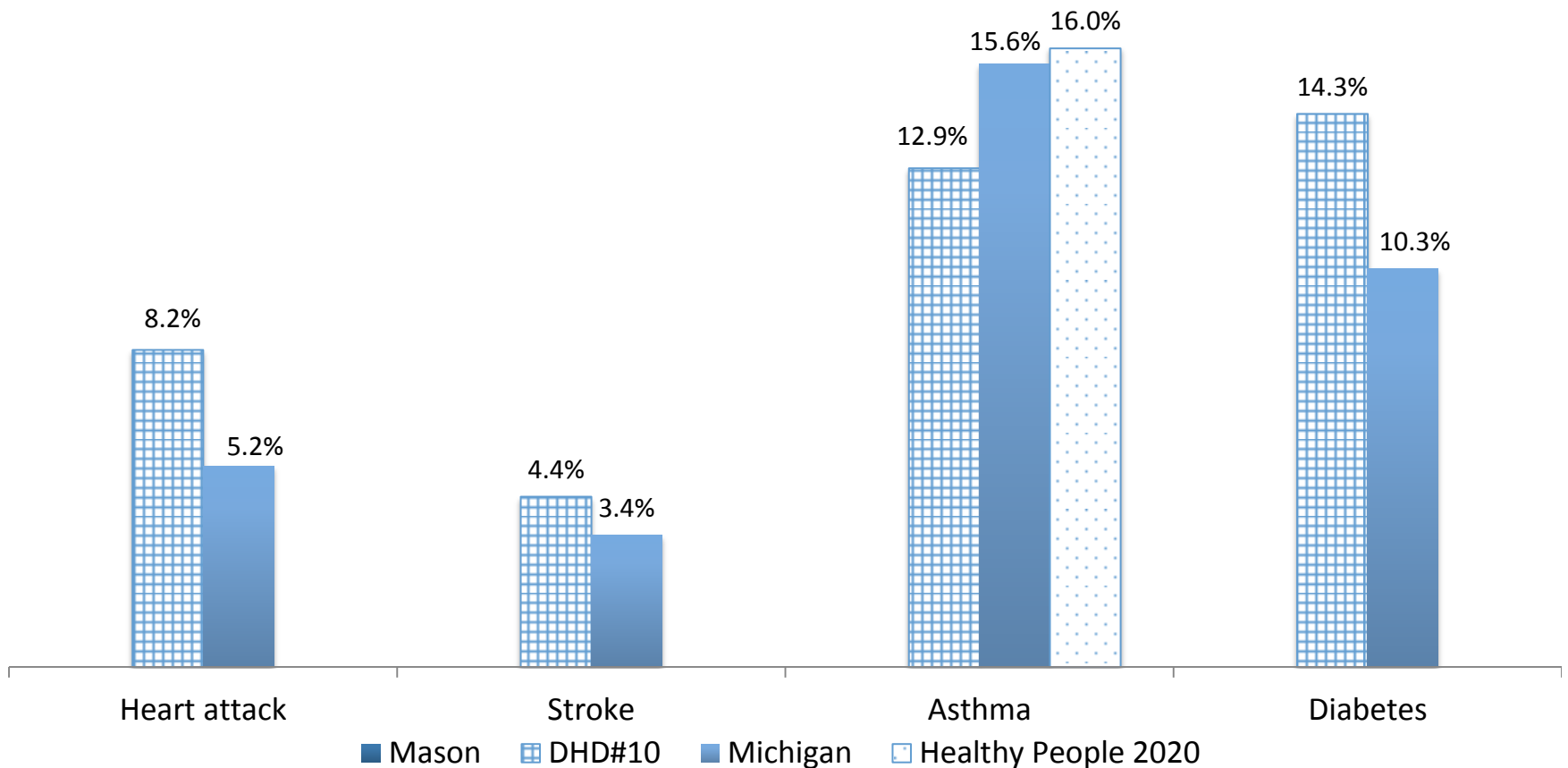
Source: Michigan Department of Community Health, Michigan Behavioral Risk Factor Surveillance System, 2011-2013, combined.



Health Behavior Risk Factors: Heart Attack, Stroke, Asthma, and Diabetes

- Percentages are based upon those who reported being told by a health care professional that they have heart disease, stroke, asthma, or diabetes.
- Data are not available for Mason County.

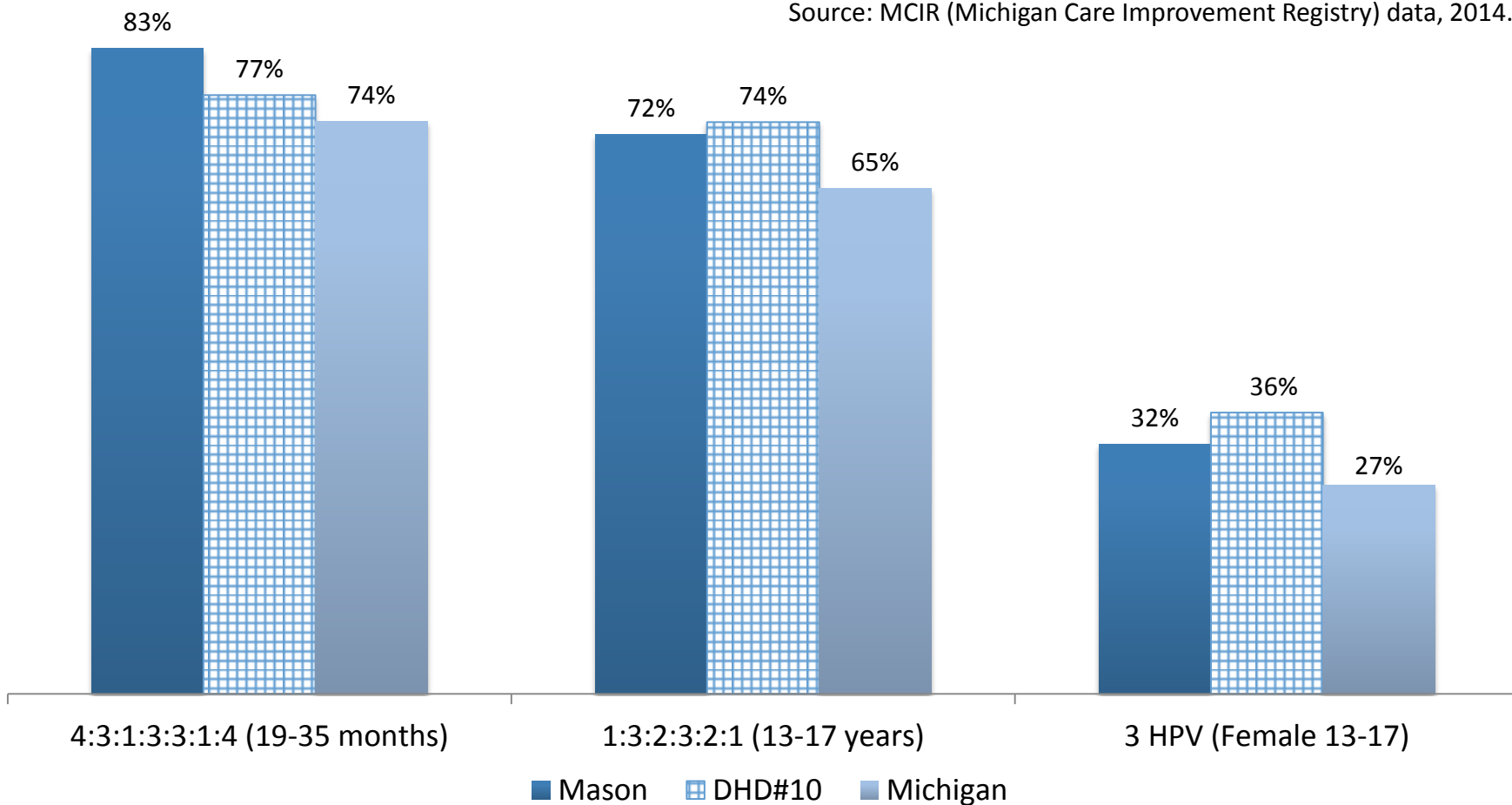
Source: Michigan Department of Community Health, Michigan Behavioral Risk Factor Surveillance System; 2011-2013, combined.



Childhood Immunizations

- 4:3:1:3:3:1:4 includes 4 doses of DTaP, 3 polio, 1 MMR, 3Hib, 3 Hepatitis B, 1 varicella, and 4 PCV7/13. This is the percent of 19-35 month old children who have received these immunizations.
- 1:3:2:3:2:1 includes 1 Tdap, 3 IPV, 2 MMR, 3 HepB, 2 Varicella, and 1 Meningococcal. This is the percent of 13-17 year olds who have received these immunizations.
- This is the percent of females age 13-17 years who have received 3 HPV.

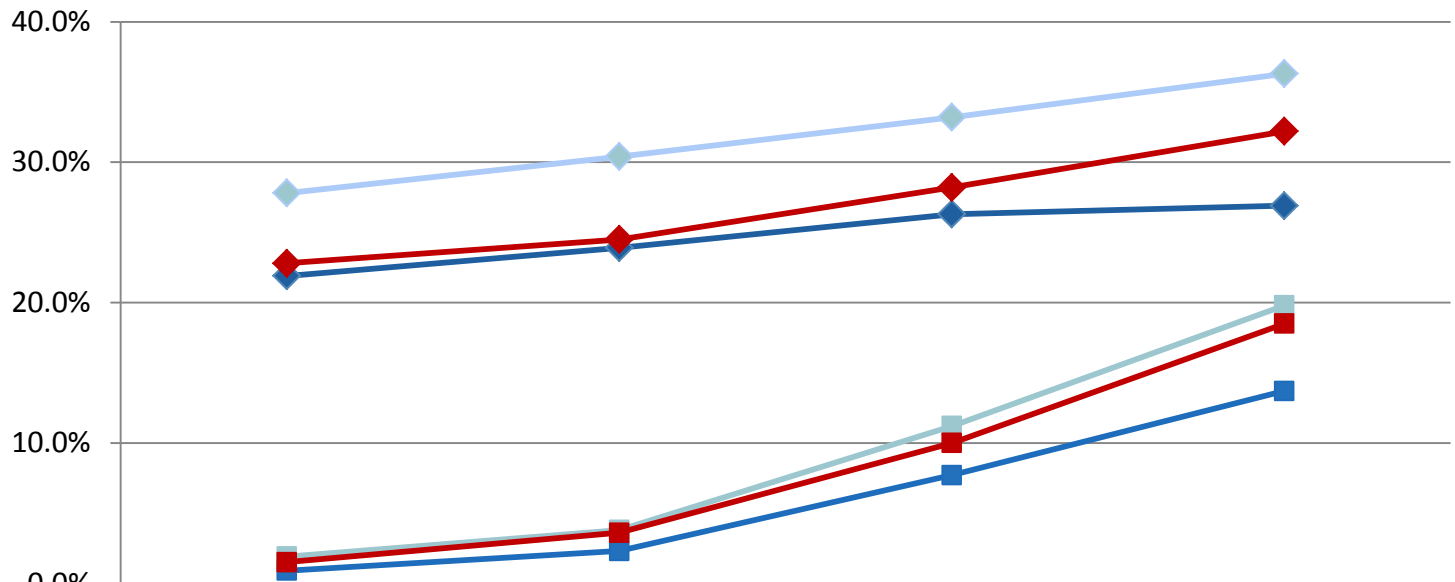
Source: MCIR (Michigan Care Improvement Registry) data, 2014.



HPV Compliance Rates

- Percentages are based upon those males and females, ages 13-17, who have received the HPV series.

Source: MCIR (Michigan Care Improvement Registry).



	January 2012	January 2013	January 2014	January 2015
Michigan - Females	21.9%	23.9%	26.3%	26.9%
Michigan - Males	0.9%	2.3%	7.7%	13.7%
DHD10 - Females	27.8%	30.4%	33.2%	36.3%
DHD10 - Males	1.9%	3.8%	11.2%	19.8%
Mason - Females	22.8%	24.5%	28.2%	32.2%
Mason - Males	1.5%	3.6%	10.0%	18.5%