

# Mason County

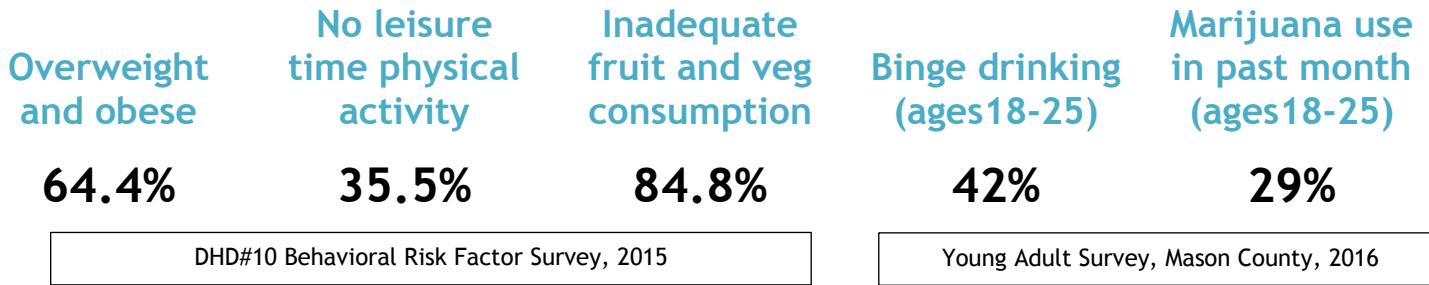
## Community Health Needs Assessment Summary

**Health Issues:**

- Access to care
- Chronic diseases
- Health disparities
- Healthy lifestyles
- Maternal/child health
- Mental health
- Substance abuse
- Tobacco use



- Chronic Disease**
- Healthy Lifestyle**
- Substance Use Disorders**



### What Matters to You? Community Member Survey Results

Top factors that define a healthy community?	<ul style="list-style-type: none"> <li>Access to health care, including primary care, specialty care, behavioral health, or dental care</li> <li>Good jobs and healthy economy</li> <li>Affordable housing</li> </ul>			
Top health problems in your community?	<ul style="list-style-type: none"> <li>Substance abuse (alcohol, illegal drugs, prescription drugs)</li> <li>Lack of affordable housing</li> <li>Lack of access to primary, specialty care, behavioral health or dental</li> </ul>			
Problems family members have getting health care services?	<table style="width: 100%; border: none;"> <tr> <td style="width: 33%; border: none;"> <b>Adults:</b> <ul style="list-style-type: none"> <li>Health insurance does not cover dental services</li> <li>Cannot afford visit to doctor, dentist, clinic, and/or hospital</li> <li>Health insurance has high deductibles/co-pays</li> </ul> </td> <td style="width: 33%; border: none;"> <b>Older Adults:</b> <ul style="list-style-type: none"> <li>Cannot afford visit to doctor, dentist, clinic, and/or hospital</li> <li>Health insurance does not cover dental services</li> <li>Transportation</li> </ul> </td> <td style="width: 33%; border: none;"> <b>Children:</b> <ul style="list-style-type: none"> <li>Cannot afford visit to doctor, dentist, clinic, and/or hospital</li> <li>Health insurance does not cover dental services</li> <li>Finding a dentist</li> </ul> </td> </tr> </table>	<b>Adults:</b> <ul style="list-style-type: none"> <li>Health insurance does not cover dental services</li> <li>Cannot afford visit to doctor, dentist, clinic, and/or hospital</li> <li>Health insurance has high deductibles/co-pays</li> </ul>	<b>Older Adults:</b> <ul style="list-style-type: none"> <li>Cannot afford visit to doctor, dentist, clinic, and/or hospital</li> <li>Health insurance does not cover dental services</li> <li>Transportation</li> </ul>	<b>Children:</b> <ul style="list-style-type: none"> <li>Cannot afford visit to doctor, dentist, clinic, and/or hospital</li> <li>Health insurance does not cover dental services</li> <li>Finding a dentist</li> </ul>
<b>Adults:</b> <ul style="list-style-type: none"> <li>Health insurance does not cover dental services</li> <li>Cannot afford visit to doctor, dentist, clinic, and/or hospital</li> <li>Health insurance has high deductibles/co-pays</li> </ul>	<b>Older Adults:</b> <ul style="list-style-type: none"> <li>Cannot afford visit to doctor, dentist, clinic, and/or hospital</li> <li>Health insurance does not cover dental services</li> <li>Transportation</li> </ul>	<b>Children:</b> <ul style="list-style-type: none"> <li>Cannot afford visit to doctor, dentist, clinic, and/or hospital</li> <li>Health insurance does not cover dental services</li> <li>Finding a dentist</li> </ul>		

1. Create an environment that supports healthy lifestyles
2. Improve behavioral health and substance abuse treatment through early intervention and trauma informed community approach
3. Foster a culture of collaboration
4. Increase access to affordable housing
5. Improve community education for adults and children
6. Provide consistent employment education and training access
7. Increase affordable/accessible health care options
8. Improve access to public transportation

Community Conversation:  
Goals Identified by Key Stakeholders