

2021 Northeast MiThrive Data Briefs

Published: January 2022

*Alcona, Alpena, Cheboygan, Crawford, Iosco, Montmorency,
Ogemaw, Oscoda, Otsego, Presque Isle, and Roscommon*

Assessment Snapshot

The **Forces of Change Assessment (FOCA)** aims to answer the following questions:

- What is occurring or might occur that affects the health and wellbeing of our community?
- What specific threats or opportunities are generated by these occurrences?

Forces of change are trends, factors, and events *outside of our control* that may influence the health of our community or the system of organizations supporting the community, both in the recent past and the foreseeable future.

The FOCA Topic Areas:

1. Government Leadership & Budgets, Spending Priorities
2. Sufficient Health Care Workforce
3. Access to Health Services
4. Population Demographics
5. Economic Environment
6. Access to Social Services
7. Social Context
8. COVID-19 Pandemic

The **Community Health Status Assessment (CHSA)** aims to answer the following questions:

- How healthy are our residents?
- What does the health status of our community look like?

The answers to these questions were measured by collecting 100 secondary indicators from 20 different sources including the US Census Bureau, Centers for Disease Control, and Michigan Department of Health and Human Services. The table in green shows select indicators relevant to the strategic issue.

For each strategic issue, a map related to one of the indicators in the table is visualized at either the census-tract or county level. A brief statement highlighting the geographical disparities is located near the map.

The **Community System Assessment (CSA)** aims to answer the following question:

- What are the components, activities, competencies, and capacities in our local systems?

The CSA assessed performance measures for 8 topic areas:

1. Resources
2. Policies
3. Data Access & Capacity
4. Community Alliances
5. Workforce
6. Leadership
7. Community Power/Engagement
8. Capacity for Health Equity

The CSA was conducted at the regional level. Additional data was then collected at the county-level through facilitated conversations at community collaboratives.

The **Community Themes and Strengths Assessment (CTSA)** aims to answer the following questions:

- What is important to the community?
- How is quality of life perceived in the community?
- What assets does the community have that can be used to improve community health?

The CTSA collected data using 3 different methods:

1. **Pulse Survey Series:** Four, three question mini client interviews conducted by community partners with clients and patients. Topics included education, aging, disability, and economic security.
2. **Community Survey:** This survey was conducted through an online and paper format and asked questions about what makes a thriving community, current issues impacting the health of the community, and quality of life questions.
3. **Provider Survey:** This survey was conducted through an online format and targeted individuals providing direct care and services.

Data Brief Navigation Guide

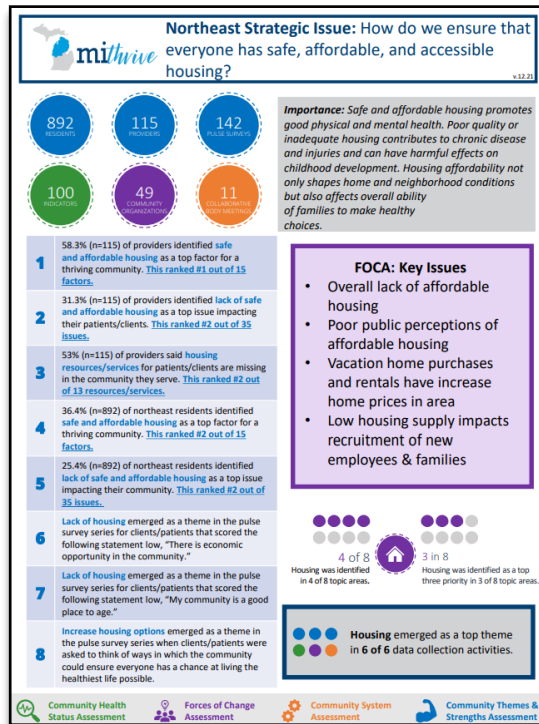
Data was collected 6 different ways. Each circle represents a different data collection method.

Data collected in the Community Themes and Strengths Assessment is shown in blue. Data was collected through a community survey, provider survey, and pulse surveys as reflected by the 3 blue circles.

Strategic issue

Data collected in the Community Health Status Assessment is shown in green. Indicators in bold had a state value available to compare to. If the regional value was worse than the state value (meaning of worse depends on what the indicator is measuring) an asterisk is placed next to the indicator title.

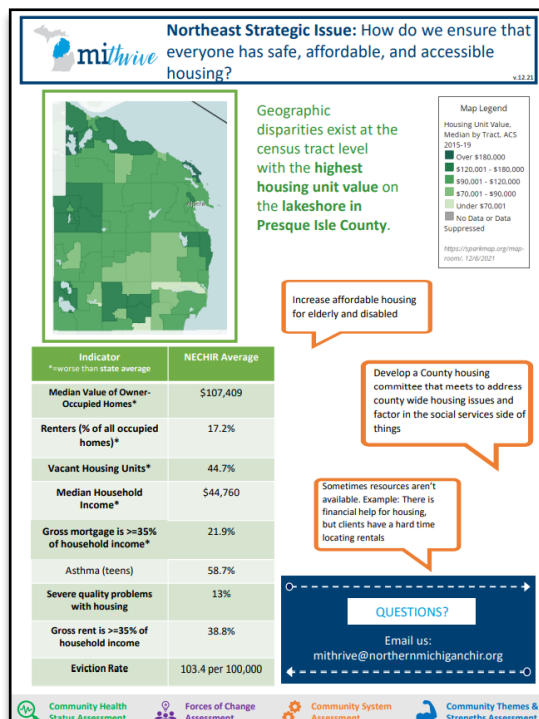
*This remains true for all strategic issues besides COVID-19 where the asterisk represents a regional value higher than the state value.



Importance Statement

Data collected in the Forces of Change Assessment is shown in purple. The dot illustration represents how often the strategic issue was identified in one of the 8 topic areas (left) and as a top priority within a topic area (right)

This graphic illustrates where a topic or theme emerged in the different data collection methods.



Data collected in the Community System Assessment is shown in orange. The dot illustration represents the number of community collaboratives in which a topic or theme emerged. The comment boxes indicate comments from participants regarding recurring themes.

Color coded key illustrating the 4 MiThrive assessments

Data Brief Acronyms

Acronym	What does it stand for?	What does it mean?
YPLL	Years Potential Life Lost	The difference between a predetermined end point (usually age 75 and the age at death for death(s) that occurred prior to that end point age
ALICE	Asset Limited, Income Constrained, Employed	The ALICE population represents those among us who are working, but due to childcare costs, transportation challenges, high cost of living and so much more are living paycheck to paycheck.
FPL	Federal Poverty Level	A measure of income issued every year by the Department of Health and Human Services used to determine eligibility for certain programs and benefits.
ACE(s)	Adverse Childhood Experience(s)	Potentially traumatic events that occur in childhood (0-17 years)
HPSA	Health Professional Shortage Area	Geographic areas, populations, or facilities with a shortage of primary, dental or mental health care providers.
WIC	Women Infants Children	Aims to safeguard the health of low-income women, infants, and children up to age 5 who are at nutrition risk by providing nutritious foods to supplement diets, information on healthy eating, and referrals to care
COPD	Chronic Obstructive Pulmonary Disorder	Chronic inflammatory lung disease that causes obstructed airflow from the lungs.
Description of per 100,000		Rates take into account the number of cases/deaths/etc. and the population size. Rate per 100,000 is calculated by taking the total number of cases divided by the total population and multiplied by 100,000.
Description of Gini index		measure of income inequality.; It ranges from 0, indicating perfect equality (everyone receives an equal share), to 1, perfect inequality (only one recipient or group of recipients receives all the income)



Importance: Safe and affordable housing promotes good physical and mental health. Poor quality or inadequate housing contributes to chronic disease and injuries and can have harmful effects on childhood development. Housing affordability not only shapes home and neighborhood conditions but also affects overall ability of families to make healthy choices.

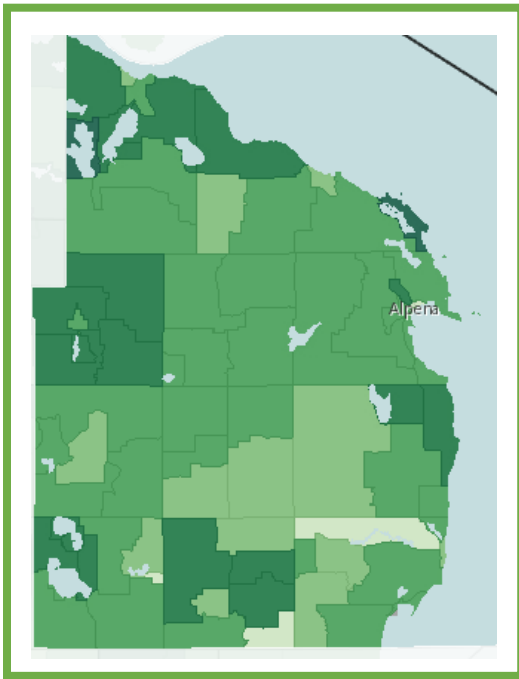
1	58.3% (n=115) of providers identified safe and affordable housing as a top factor for a thriving community. This ranked #1 out of 15 factors.
2	31.3% (n=115) of providers identified lack of safe and affordable housing as a top issue impacting their patients/clients. This ranked #2 out of 35 issues.
3	53% (n=115) of providers said housing resources/services for patients/clients are missing in the community they serve. This ranked #2 out of 13 resources/services.
4	36.4% (n=892) of northeast residents identified safe and affordable housing as a top factor for a thriving community. This ranked #2 out of 15 factors.
5	25.4% (n=892) of northeast residents identified lack of safe and affordable housing as a top issue impacting their community. This ranked #2 out of 35 issues.
6	Lack of housing emerged as a theme in the pulse survey series for clients/patients that scored the following statement low, "There is economic opportunity in the community."
7	Lack of housing emerged as a theme in the pulse survey series for clients/patients that scored the following statement low, "My community is a good place to age."
8	Increase housing options emerged as a theme in the pulse survey series when clients/patients were asked to think of ways in which the community could ensure everyone has a chance at living the healthiest life possible.

FOCA: Key Issues

- Overall lack of affordable housing
- Poor public perceptions of affordable housing
- Vacation home purchases and rentals have increase home prices in area
- Low housing supply impacts recruitment of new employees & families



Housing emerged as a top theme in **6 of 6** data collection activities.



Geographic disparities exist at the census tract level with the **highest housing unit value on the lakeshore in Presque Isle County.**

Map Legend

Housing Unit Value, Median by Tract, ACS 2015-19

- Over \$180,000
- \$120,001 - \$180,000
- \$90,001 - \$120,000
- \$70,001 - \$90,000
- Under \$70,001
- No Data or Data Suppressed

<https://sparkmap.org/map-room/>, 12/6/2021

Increase affordable housing for elderly and disabled

Develop a County housing committee that meets to address county wide housing issues and factor in the social services side of things

Sometimes resources aren't available. Example: There is financial help for housing, but clients have a hard time locating rentals

Indicator *=worse than state average	NECHIR Average
Median Value of Owner-Occupied Homes*	\$107,409
Renters (% of all occupied homes)*	17.2%
Vacant Housing Units*	44.7%
Median Household Income*	\$44,760
Gross mortgage is >=35% of household income*	21.9%
Asthma (teens)	58.7%
Severe quality problems with housing	13%
Gross rent is >=35% of household income	38.8%
Eviction Rate	103.4 per 100,000

QUESTIONS?

Email us:

mithrive@northernmichiganchir.org



Need for more options/education with substance use disorders, stigma and access to healthcare for low income

Reduce the stigma around substance use disorders!

Stigma prevents some from asking for help or advocating for themselves. It is becoming a serious issue.



4 of 11

Community Collaborative assessments in 4 out of 11 counties identified stigma around substance use disorders as an issue in their communities.

Importance: Substance misuse impact people's chances of living long, healthy, and productive lives. It can decrease quality of life, academic performance, and workplace productivity; increases crime and motor vehicle crashes and fatalities; and raises health care costs for acute and chronic conditions.

1

28.7% (n=115) of providers identified **freedom from trauma, violence, and addiction** as a top factor for a thriving community. **This ranked #5 out of 15 factors.**

2

34.8% (n=115) of providers identified **substance use** as a top issue impacting their patients/clients. **This ranked #1 out of 35 issues.**

3

44.3% (n=115) of providers said **substance abuse services** resources/services for patients/clients are missing in the community they serve. **This ranked #4 out of 13 resources/services.**

4

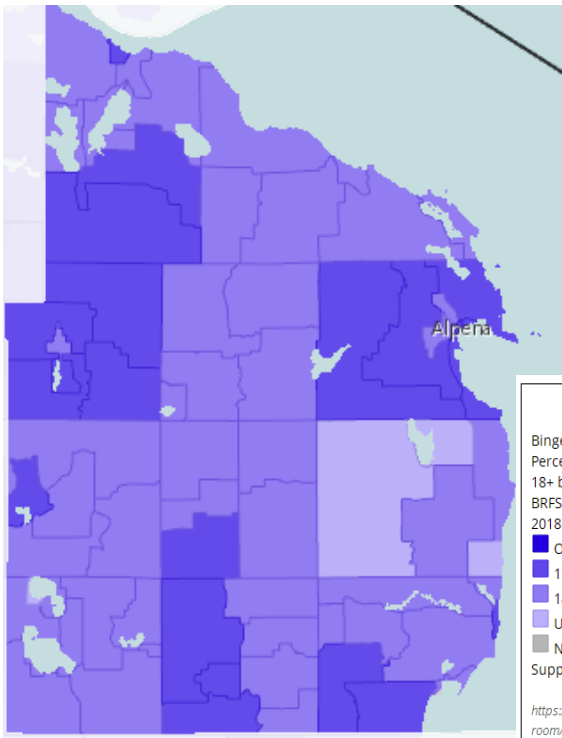
26.1% (n=892) of northeast residents identified **freedom from trauma, violence, and addiction** as a top factor for a thriving community. **This ranked #3 out of 15 factors.**

5

25.6% (n=892) of northeast residents identified **substance use** as a top issue impacting their community. **This ranked #1 out of 35 issues.**



Substance misuse emerged as a top theme in **5 of 6** data collection activities.



Geographic disparities exist at the census tract level with the **higher percentages of binge drinking in Alpena, Cheboygan, Crawford, Iosco, Ogemaw, Oscoda, and Otsego**

Our region has move of the highest rates of opioid use in the country. Although we have limited access to treatment facilities

High rates of substance misuse impacts our social system, family stability, children/ babies & crime.



3 of 8

Substance misuse was identified in 3 of 8 topic areas.



2 in 8

Substance misuse was identified as a top three priority in 2 of 8 topic areas.

Indicator *=worse than state average	NECHIR Average
Liver Disease Mortality*	15.1 per 100,000
Heart Disease Mortality*	218.2 per 100,000
Heart Disease Incidence*	153.2 per 100,000
Smoked cigarettes in past 30 days (teens)	2.6%
Teens with 2+ ACES	37.1%
Oral Cavity and Pharynx Cancer*	16.0 per 100,000
Lung and Bronchus Cancer*	70.8 per 100,000
Asthma (teens)	58.7%
Ever told COPD (adults)*	15.3 per 100,000
Binge drinking (adults)	20.1%
Used prescription drugs w/o prescription (teens)	4.9%
Used marijuana in past 30 days (teens)	8.5%
Had a drink of alcohol in past 30 days (teens)	10.6%
Smoked cigarettes in past 30 days (teens)	2.6%
Used chew tobacco in past 30 days (teens)	2.4%
Vaped in past 30 days (teens)	13.8%
Opioid related hospitalizations*	21.6 per 100,000
Motor vehicle crash involving alcohol mortality*	42%
Drug-Induced Mortality	18.0 per 100,000
Alcohol-Induced Mortality*	18.9 per 100,000

QUESTIONS?

Email us:

mithrive@northernmichiganchir.org

892

RESIDENTS

115

PROVIDERS

142

PULSE SURVEYS

100

INDICATORS

49

COMMUNITY
ORGANIZATIONS

11

COLLABORATIVE
BODY MEETINGS

Importance: Mental health is essential to a person's well-being, healthy relationships, and ability to live a full life. It also plays a major role in people's ability to maintain good physical health because mental illness increases risk for many chronic health conditions.

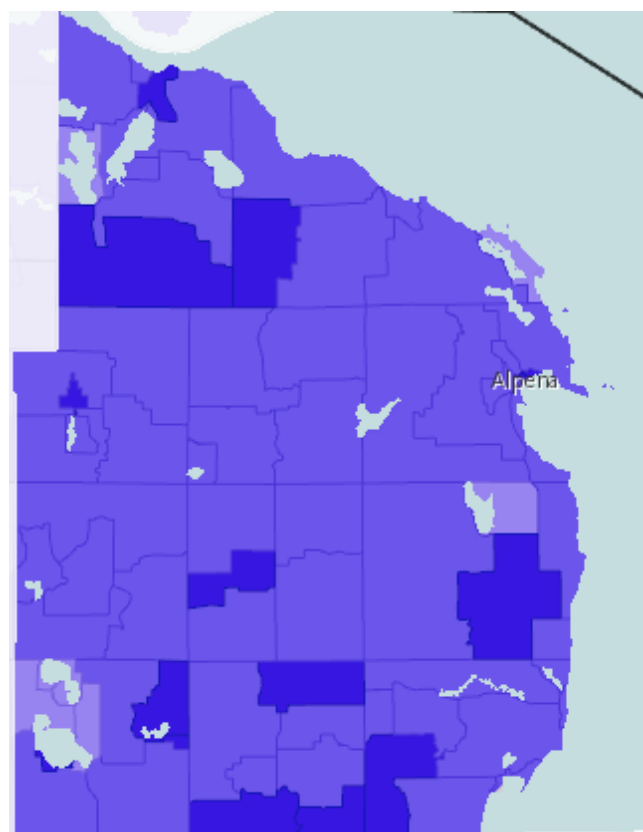
Geographic disparities exist at the census tract level with pockets of **high percentages of poor mental health** in all counties **besides Crawford and Montmorency**

Map Legend

Poor Mental Health, Prevalence Among Adults Age 18+ by Tract, CDC BRFSS PLACES Project 2018

- Over 16.0%
- 13.1% - 16.0%
- 10.1% - 13.0%
- Under 10.1%
- No Data or Data Suppressed

<https://sparkmap.org/map-room/>, 12/3/2021



Indicator

*=worse than state average

NECHIR Average

Teens with 2+ ACES

37.1%

Alzheimer's/Dementia Mortality

25.7 per 100,000

Poor mental health 14+ days (adult)

14.7%

Major depressive episode (teen)

38.7%

Average HPSA Score Mental Health*

17.8

Intentional Self-Harm*

21.5 per 100,000



Mental health emerged as a top theme in **5 of 6** data collection activities.



Community Health
Status Assessment



Forces of Change
Assessment



Community System
Assessment



Community Themes &
Strengths Assessment

1	33% (n=115) of providers identified access to quality behavioral health services as a top factor for a thriving community. <u>This ranked #3 out of 15 factors.</u>
2	28.7% (n=115) of providers identified freedom from trauma, violence, and addiction as a top factor for a thriving community. <u>This ranked #5 out of 15 factors.</u>
3	20% (n=115) of providers identified lack of access to behavioral health services as a top issue impacting their patients/clients. <u>This ranked #6 out of 35 issues.</u>
4	57.4% (n=115) of providers said mental health resources/services for patients/clients are missing in the community they serve. <u>This ranked #1 out of 13 resources/services.</u>
5	26.1% (n=892) of northeast residents identified freedom from trauma, violence, and addiction as a top factor for a thriving community. <u>This ranked #3 out of 15 factors.</u>
6	19.4% (n=892) of northeast residents identified access to quality behavioral health services as a top factor for a thriving community. <u>This ranked #6 out of 15 factors.</u>
7	13% (n=892) of northeast residents identified lack of access to behavioral health services as a top issue impacting their community. <u>This ranked #5 out of 35 issues.</u>
8	11.9% (n=892) of northeast residents identified lack of quality behavioral health services as a top issue impacting their community. <u>This ranked #6 out of 35 issues.</u>
9	A greater focus on mental health emerged as a theme in the pulse survey series when clients/patients were asked to identify ways in which the community could ensure everyone has a chance at living the healthiest life possible.
10	Increased mental health support emerged as a theme in the pulse survey series when clients/patients were asked how we can come together so that people promote each others wellbeing and not just their own.

Include mental health in our process for identifying key constituents or stakeholders for improving community wellness

Stigma prevents some from asking for help or advocating for themselves and is becoming a serious issue

Stigma, stigma, stigma

Mental health services were strained before COVID-19 brought an influx of new clients to the system

3 of 8
Behavioral health services was identified in 3 of 8 topic areas.

7 of 11
Community Collaborative assessments in 7 out of 11 counties identified access to mental health services as an issue.

Education requirements are so high that general population can't apply. Opportunity for self-help or volunteer led programs

Telehealth services have helped some

2 in 8
Behavioral health services was identified as a top three priority in 2 of 8 topic areas.

QUESTIONS?

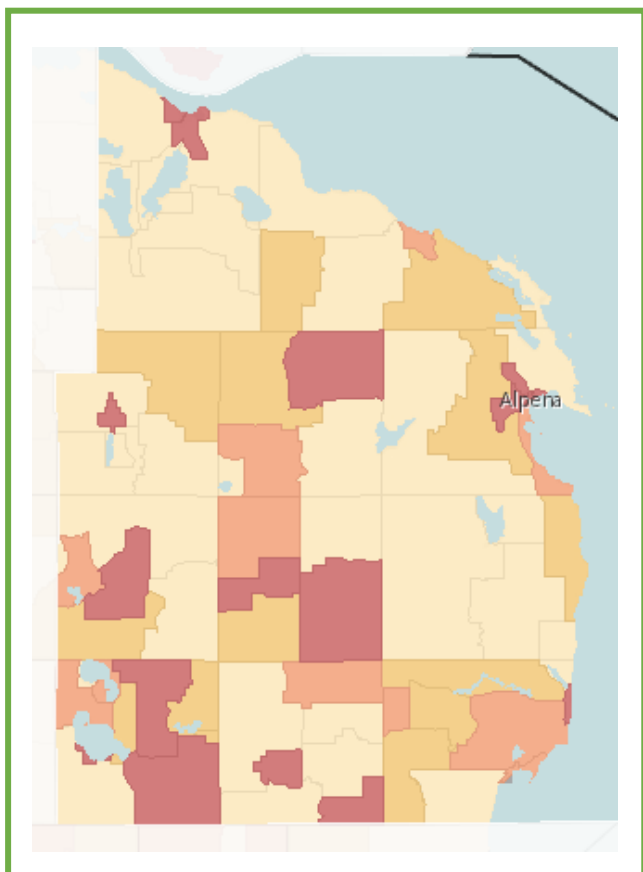
Email us:

mithrive@northernmichigananchir.org

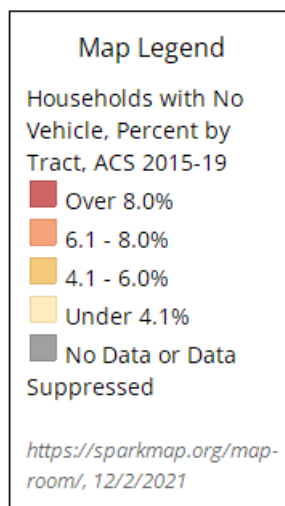


Importance: Transportation is a critical factor that influences people's health and the health of a community. Barriers to transportation options may result in missed or delayed health care visits, increased health expenditures and overall poorer health outcomes.

Geographic disparities exist at the census tract level with a pockets of the **high percentages of households with no vehicle** in all counties besides **Alcona** and **Presque Isle**



Indicator *=worse than state average	NECHIR Average
Motor vehicle crash mortality	14.0 per 100,000
No household vehicle	5.9%



Transportation emerged as a top theme in **4 of 6** data collection activities.



1	30.4% (n=115) of providers identified reliable transportation as a top factor for a thriving community. <u>This ranked #4 out of 15 factors.</u>
2	20% (n=115) of providers identified unreliable transportation as a top issue impacting their patients/clients. <u>This ranked #7 out of 35 issues.</u>
3	52.2% (n=115) of providers said transportation resources/services for patients/clients are missing in the community they serve. <u>This ranked #3 out of 13 resources/services.</u>
4	Transportation and long commute emerged as themes in the pulse survey series for clients/patients that scored the following statement low, "There is economic opportunity in the community."
5	Increasing transportation options emerged as a theme in the pulse survey series when clients/patients were asked to identify ways in which to ensure people in tough life circumstances come to have as good a chance as others do in achieving good health and wellbeing over time.
6	Lack of transportation emerged as a theme in the pulse survey series for clients/patients that scored the following statement low, "My community is a good place to age."
7	Improve transportation options emerged as a theme in the pulse survey series when clients/patients were asked to think of ways in which the community can ensure everyone has a chance at living the healthiest life possible.

FOCA: Key Issues

- Workforce is impacted by long commutes, lack of transportation and childcare
- Limited access to healthcare & providers in rural areas has increased the distance people have to travel to receive care

Transportation is needed so people can physically access resources

There is a need for significant transportation improvement.

Would like to see county transportation systems cross county borders



4 of 11

Community Collaborative assessments in 4 out of 11 counties identified transportation barriers as impacting the health of their community.

QUESTIONS?

Email us:

mithrive@northernmichiganchir.org





Importance: Health and wealth are closely linked. Economic disadvantage affects health by limiting choice and access to proper nutrition, safe neighborhoods, transportation and other elements that define standard of living. People who live in socially vulnerable areas live shorter lives and experience reduced quality of life.

1

28.7% (n=115) of providers identified **economic instability** as a top issue impacting their patients/clients. [This ranked #4 out of 35 issues.](#)

2

24.9% (n=892) of northeast residents identified **meaningful and rewarding work** as a top factor for a thriving community. [This ranked #4 out of 15 factors.](#)

3

24% (n=892) of northeast residents identified **economic instability** as a top issue impacting their community. [This ranked #3 out of 35 issues.](#)

4

Lack of job availability and wages emerged as themes in the pulse survey series for clients/patients that scored the following statement low, "There is economic opportunity in the community."

5

Poverty emerged as a theme in the pulse survey series when clients/patients were asked to think about groups that experience relatively good health and those that experience poor health and identify why there might be a difference.

6

Poverty emerged as a theme in the pulse survey series for clients/patients that scored the following statement low, "My community is a good place to age."

Opportunity to work with Intermediate School Districts to increase trade school options

* ALICE refers to the population in our communities that are Asset Limited, Income Constrained, Employed. The ALICE population represents those among us who are working, but due to childcare costs, transportation challenges, high cost of living and so much more, living paycheck to paycheck.

Lack of income can lead to poor outcomes in many different areas of life

Region has a large population living in poverty or within ALICE*



5 of 8

Economic security was identified in 5 of 8 topic areas.

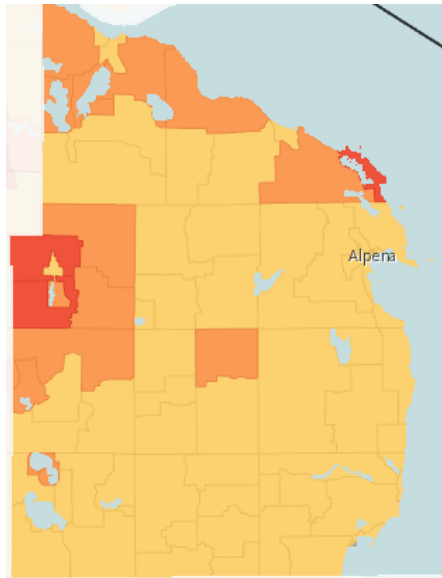


4 in 8

Economic security was identified as a top three priority in 4 of 8 topic areas.



Economic security emerged as a top theme in **5 of 6** data collection activities.



Map Legend
Median Household Income by Tract, ACS 2015-19

- Over \$70,000
- \$60,001 - \$70,000
- \$50,001 - \$60,000
- Under \$50,001
- No Data or Data Suppressed

<https://sparkmap.org/map-room/>, 12/2/2021

Geographic disparities exist at the census tract level with **highest household incomes in Otsego and Presque Isle**

There is opportunity overall to educate agencies within the community system if we want to have a healthy economy.

Jobs that are available are not always paying at a level that is a reasonable living wage

Identify and address barriers to resources, especially for marginalized persons. Need stakeholder involvement in all levels of policy and resource development and delivery; affordable housing, transportation, living wages, and access to broadband and electronic access equipment



5 of 11

Community Collaborative assessments in 5 out of 11 counties identified economic instability as an issue.

Indicator *=worse than state average	NECHIR Average
Median Household Income*	\$44,760
Gross mortgage is >=35% of household income*	21.9%
High school graduation rate	84.8%
High school graduate or higher*	88.9%
Bachelor degree or higher*	16.8%
Children 0-5 in Special Education*	3.2%
Special Education % Child Find	99.7%
Students not proficient in Grade 4 English*	56.8%
ALICE Households*	27.4%
Households below federal poverty level (FPL)*	15.0%
Families living below the poverty level (%)*	10.7%
Population below poverty level*	17.3%
Children below poverty level*	23.1%
Unemployment	3.6%
Income inequality (Gini index)	0.43

QUESTIONS?

Email us:

mithrive@northernmichigananchir.org



Importance: Health inequities are systematic and unjust differences in opportunities to achieve optimum health and wellbeing. These inequities lead to preventable differences in health status or outcome (health disparities). The dimensions in which health disparities exist can include geographic location, race, ethnicity, disability, age, sexual identity, and socioeconomic status.

1	Strengthening community engagement and promoting social justice emerged as themes in the pulse survey series when clients/patients were asked to identify ways in which their community could ensure everyone has a chance at living the healthiest life possible.
2	Strengthen community connection and support emerged as theme in the pulse survey series when clients/patients were asked to identify ways in which we can come together so that people promote each other's wellbeing and not just their own.
3	A lack of community support/connectedness and system navigation issues emerged as themes in the pulse survey series when clients/patients were asked to think about groups that experience relatively good health and those that experience poor health and to identify why that difference may exist.
4	Social stigma and discrimination emerged as themes in the pulse survey series for clients/patients that scored the following statement low, "My community is a good place to age."
5	13.3% (n=892) of northeast residents identified belonging and inclusion as a top factor a thriving community.
6	7.8% (n=892) of northeast residents identified racism and discrimination as a top issue impacting their community.

FOCA: Key Issues

- Improving social connectedness could improve self-confidence and empowerment
- There is a lot of stigma related to substance use disorder treatment
- Broadband resources have increased availability to many services but only for those who have broadband availability, who can afford it and who know how to use it. The region's large population of old adults are not comfortable using the internet



3 of 8

Diversity, equity, and inclusion was identified in 3 of 8 topic areas.

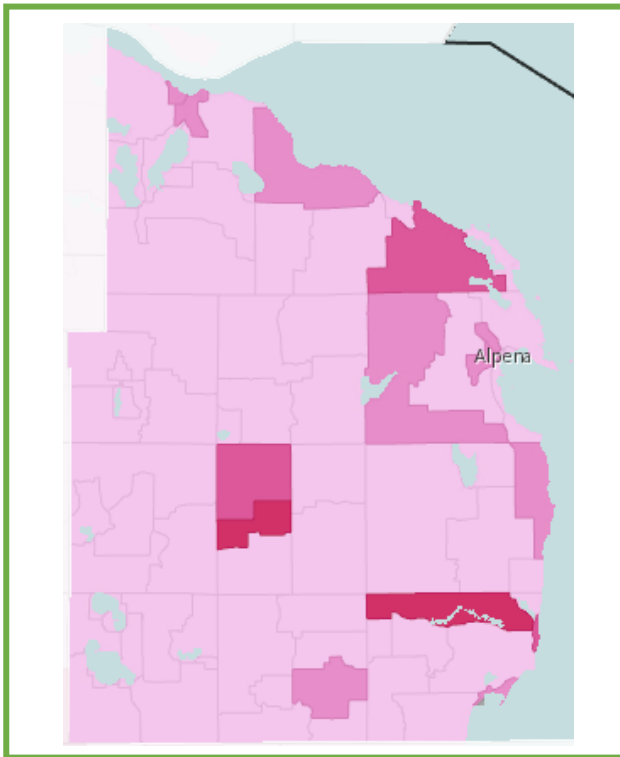


0 in 8

Diversity, equity, and inclusion was identified as a top three priority in 0 of 8 topic areas.



Diversity, equity, and inclusion emerged as a top theme in 4 of 6 data collection activities.



Geographic disparities exist at the census tract level with the **highest percentages of limited English proficiency in Iosco and Oscoda**

Stigma is a barrier to resources: "Those have been turned away are afraid to come back"

People believe that they don't have a voice or that their voice is not going to be heard

Community participation – recognizing how helping vulnerable populations helps the community as a whole

Indicator *=worse than state average	NECHIR Average
Children 0-5 in Special Education*	3.2%
Special Education % Child Find	99.7%
Children enrolled in early education	31.2%
Students not proficient in Grade 4 English*	56.8%
High school graduation	84.8%
High school graduate or higher*	88.9%
Bachelor's degree or higher*	16.8%
Families living below federal poverty level (FPL)*	10.7%
ALICE Households*	27.4%



QUESTIONS?

Email us:

mithrive@northernmichigananchir.org



Community Health
Status Assessment



Forces of Change
Assessment



Community System
Assessment



Community Themes &
Strengths Assessment



Importance: Access to health services affects a person's health and well-being. It can prevent disease and disability, detect and treat illness and conditions; and reduce the likelihood of early death and increase life expectancy.

1	58.3% (n=115) of providers identified access to quality healthcare services as a top factor for a thriving community. <u>This ranked #2 out of 15 factors.</u>
2	24.3% (n=115) of providers identified disease and illness prevention as a top factor for a thriving community. <u>This ranked #7 out of 15 factors.</u>
3	20.9% (n=115) of providers identified lack of access to healthcare services as a top issue impacting their patients/clients. <u>This ranked #5 out of 35 issues.</u>
4	37% (n=892) of northeast residents identified access to quality healthcare services as a top factor for a thriving community. <u>This ranked #1 out of 15 factors.</u>
5	11.5% (n=892) of northeast residents identified lack of access to healthcare services as a top issue impacting their community. <u>This ranked #7 (tie) out of 35 issues.</u>
6	11.5% (n=892) of northeast residents identified lack of quality healthcare services as a top issue impacting their community. <u>This ranked #7 (tie) out of 35 issues.</u>
7	Improve the healthcare system emerged as a theme in the pulse survey series when clients/patients were asked to identify ways we can ensure people in tough life circumstance come to have as good a chance as others do in achieving good health and wellbeing over time.
8	Healthcare and insurance emerged as themes in the pulse survey series when clients/patients were asked to identify why some groups of people experience relatively good health as compared to those that experience poor health.
9	Lack of healthcare emerged as a theme in the pulse survey series for patients/client that scored the following statement low, "My community is a good place to age."

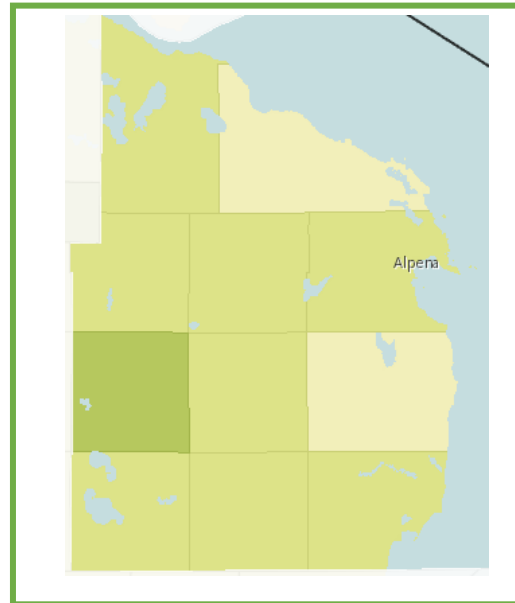
FOCA: Key Issues

- The healthcare workforce isn't sufficient.
- COVID-19 and healthcare access issues have led to less preventative care and poor health outcomes.
- Accessing healthcare through telehealth has been helpful to some but broadband access is limited for others.
- Some are unsure how to access insurance navigators or receive ineffective insurance referrals.
- Health insurance can be too expensive

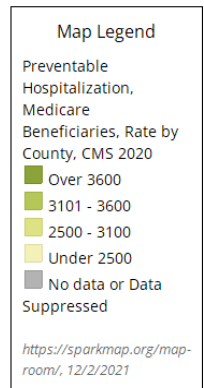


Healthcare emerged as a top theme in **5 of 6** data collection activities.

Indicator *= worse than state average	NECHIR Average
Self-reported health fair or poor*	24.9%
All Cancer Incidence*	459.6 per 100,000
Average HPSA Score-Dental Health*	19.1
Liver disease mortality*	15.1 per 100,000
Chronic lower respiratory disease mortality	64.1 per 100,000
Uninsured*	7.0%
No personal health checkup in the past year	17.1%
Preventable hospital stays (Medicare enrollees)	3,692.1 per 100,000
Average HPSA Score – Primary Care*	16.0
Fully immunized toddlers (aged 19-35 months)*	67.8%
Colorectal cancer incidence*	40.1 per 100,000
All cancer mortality*	179.5 per 100,000
Diabetes mortality	21.9 per 100,000
Heart disease mortality*	218.2 per 100,000
Heart disease incidence (adults)*	153.2 per 100,000
YPLL Pneumonia/Flu	94.5 per 100,000
Pneumonia incidence*	38.9 per 100,000
Chronic lower respiratory disease mortality*	64.1 per 100,000
Kidney disease mortality*	15.1 per 100,000
Oral cavity and pharynx cancer incidence*	16.0 per 100,000
Lung and bronchus cancer incidence*	70.8 per 100,000
Ever told diabetes (adults)*	18.2%
Ever told COPD (adults)*	15.3%
All causes of death*	846.3 per 100,000



Geographic disparities exist at the county level with the **highest preventable hospitalization rate in Crawford County.**



We live in a 600 Sq Mile county with only two health clinics. Medical access is a challenge

There is a lack of healthcare resources and barriers to access. There is a need to improve access to care for low-income individuals

Increase education for health care workers regarding diversity and health equity

QUESTIONS?

Email us:

mithrive@northernmichiganchir.org





Importance: Witnessing or being a victim of child maltreatment, youth violence, intimate partner, violence, bullying, or elder abuse are linked to lifelong physical, emotional, and social consequences.

1	28.7% (n=115) of providers identified freedom from trauma, violence, and addiction as a top factor for a thriving community. <u>This ranked #5 out of 15 factors.</u>
2	26.1% (n=892) of northeast residents identified freedom from trauma, violence, and addiction as a top factor for a thriving community. <u>This ranked #3 out of 15 factors.</u>
3	Social stigma and discrimination emerged as themes in the pulse survey series for clients/patients that scored the following statement low, "My community is a good place to age."
4	Safety concerns emerged as a theme in the pulse survey series for clients/patients that scored the following statement low, "My community is a good place to raise children."
5	13.3% (n=892) of northeast residents identified belonging and inclusion as a top factor a thriving community.
6	7.8% (n=892) of northeast residents identified racism and discrimination as a top issue impacting their community.

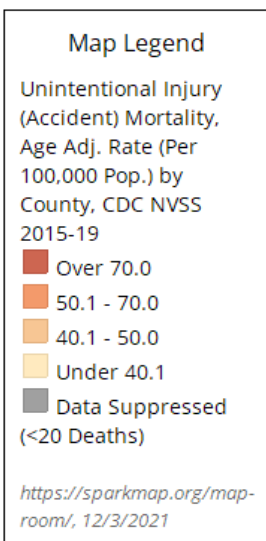
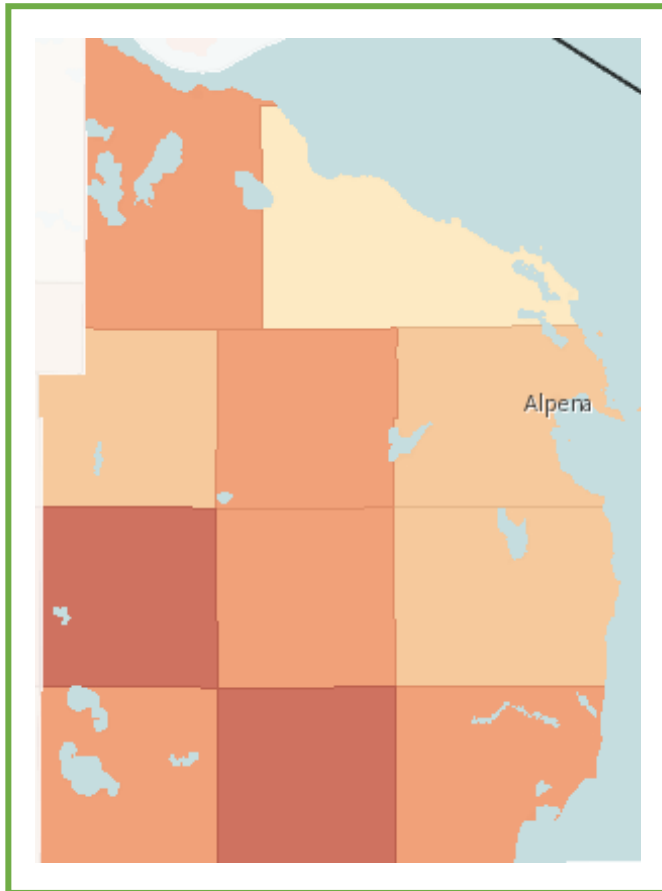
Improvement identified – Need a small home community for the homeless

Need for family wrap-around support

Need to Empower people to know and/or like that they have options



Safety and wellbeing emerged as a top theme in **4 of 6** data collection activities.



Geographic disparities exist at the county level with **higher age-adjusted rates of unintentional injury in Crawford and Ogemaw**

Indicator *=worse than state average	NECHIR Average
Teens with 2+ ACES	37.1%
Child abuse/neglect rate*	154.3 per 1,000
Injury mortality*	96.5 per 100,000
Unintentional injury mortality*	54.8 per 100,000
Motor vehicle crash mortality	14.0 per 100,000

There has been an increase in funding & awareness of early childhood supports

Opportunities to increase Mental Health First Aid training with region's high rates of trauma and suicide



QUESTIONS?

Email us:

mithrive@northernmichiganchir.org



Importance: In addition to causing disease and death, the COVID-19 pandemic has had a negative impact on healthy and active lifestyles as well as mental health and quality of life.

1

15% (n=892) of northeast residents identified **COVID-19** as a top issue impacting their community. **This ranked #4 out of 35 issues.**

2

COVID-19 prevention measures and affordable/accessible childcare emerged as themes in the pulse survey series when clients/patients were asked to think of ways to ensure people in tough life circumstances come to have as good a chance as others do in achieving good health and wellbeing over time.

CSA Key Issues

- Covid-19 has impacted the ability to update community assessments with current information continuously. Assessment is a lengthy endeavor and has been hard to update. The focus of health improvement issues has shifted to Covid.
- Covid has had a huge impact on the ability of the Community System to collaborate on health improvement initiatives.
- Not being able to meet face to ace and having to be online is a huge barrier to community engagement

Problems with access to accurate information and lack of discernment of the information

Vaccine hesitancy and polarization of pro/anti-vaccination

Local resources & experts have community's trust



2 of 8*

COVID-19 was identified in 2 of 8 topic areas.



1 in 8*

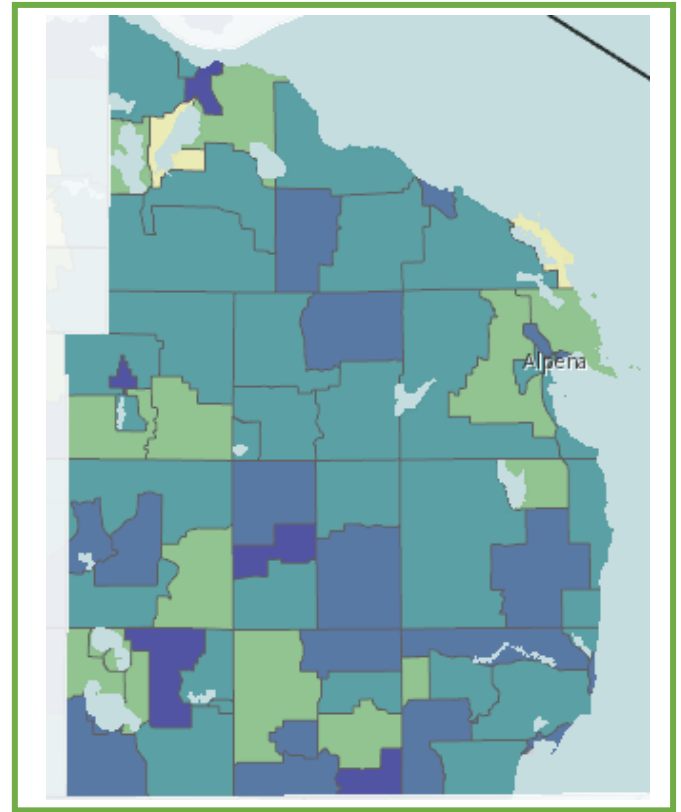
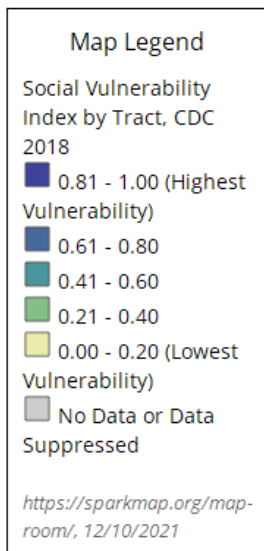
COVID-19 was identified as a top three priority in 1 of 8 topic areas.

*COVID-19 was a stand-alone Topic Area; participants were instructed to focus on their Topic Area rather than on COVID-19



COVID-19 emerged as a top theme in **5 of 6** data collection activities.

Indicator *=higher than state average	NECHIR Average
Median household income	\$44,760
Population living below poverty*	17.3%
Unemployed	3.6%
High school graduate	88.9%
Population under the age of 18	16.9%
Non-Hispanic white population*	94.4%
Population aged 65+*	28.9%
Population living with a disability*	21.5%
Not proficient in English	0.2%
No household vehicle	5.9%
Child food insecurity*	19.9%
Population food insecurity*	16.4%



Geographic disparities exist at the census tract level with **higher social vulnerability** in areas of Cheboygan, Ogemaw, Oscoda, Otsego, and Roscommon

QUESTIONS?

Email us:

mithrive@northernmichiganchir.org

892

RESIDENTS

115

PROVIDERS

142

PULSE SURVEYS

100

INDICATORS

49

COMMUNITY
ORGANIZATIONS

11

COLLABORATIVE
BODY MEETINGS

Importance: Obesity is a complex health issue resulting from a combination of causes and factors such as genetics, individual behavior, environment, access to food, education and skills, and income. Consequences of obesity include poorer mental health outcomes, reduced quality of life, and comorbidities.

Map Legend

Obese (BMI ≥ 30),
Adults Age 20+,
Percent by County,
CDC NCCDPHP 2019

Over 34.0%

30.1 - 34.0%

26.1 - 30.0%

Under 26.1%

No Data or Data
Suppressed

<https://sparkmap.org/map-room/>, 12/6/2021

Alpena

Indicator *=higher than state average	NECHIR Average
Teens with 5+ fruits/vegetables per day	24.5%
Obesity (teens)	17.3%
Obesity (adults)	39.3%
Overweight (teens)	19.1%
Overweight (adults)	32.5%
Population food insecurity*	16.4%
Child food insecurity*	19.9%

Geographic disparities exist at the county level with **lower percentages of adult obesity in Alpena, Crawford, Roscommon, and Ogemaw**



Obesity emerged as a top theme in **4 of 6** data collection activities.



Community Health
Status Assessment



Forces of Change
Assessment



Community System
Assessment



Community Themes &
Strengths Assessment

1

27.8% (n=115) of providers identified **nutritious food** as a top factor for a thriving community. [This ranked #6 out of 15 factors.](#)

2

24.3% (n=115) of providers identified **disease and illness prevention** as a top factor for a thriving community. [This ranked #7 out of 15 factors.](#)

3

29.6% (n=115) of providers identified **obesity** as a top issue impacting their patients/clients. [This ranked #3 out of 35 issues.](#)

4

17.9% (n=892) of northeast residents identified **access to nutritious food** as a top factor for a thriving community. [This ranked #7 out of 15 factors.](#)

5

Promote nutrition and physical activity emerged as a theme in the pulse survey series when clients/patients were asked to identify ways in which the community could ensure everyone has a chance at living the healthiest life possible.

6

More affordable recreation emerged as a theme in the pulse survey series when clients/patients were asked to identify ways in which the community can come together so that people promote each other's wellbeing and not just their own.

What improvements would you like to see in your Community System in the next three years?

When it comes to the people we reach about their health, help people set their own health goals and empower them with ongoing information to help them work towards their goals.

QUESTIONS?

Email us:

mithrive@northernmichiganchir.org



Community Health
Status Assessment



Forces of Change
Assessment



Community System
Assessment



Community Themes &
Strengths Assessment